



Oluce Lanterna Pendant

LA9401

SOURCE: <https://www.davidvillagelighting.co.uk/product/oluce-lanterna-pendant/9889>



PRODUCT DESCRIPTION

Designer: Marta Laudani & Marco Romanelli

Oluce Lanterna Pendant

Oluce Lanterna Pendant was designed by Marta Laudani & Marco Romanelli in 1998. The Lanterna family achieve tranquillity by enclosing light inside a cone casing which is completed by a single bulb. Naturally shaped sand-blasted glass creates the Lanterna's shade and is attached to the anodized metal fixture which is then hung from the ceiling by a 280cm cable. Lanterna's glass shade is a classic design which references traditional glass lanterns of the past.

Lanterna Pendant is suitable above a kitchen island or dining table either alone or in a cluster to create an impressive visual display. Designed to allow light to pass through the shade, creating an even dispersed glow and not a direct downward light. Laudani and Romanelli designed this pendant in two different sizes: 477 and 471.

PRODUCT SPECIFICATION

Light Source: 471

1x Max 40W, E14 (Excluded)

477

1x Max 100W, E27 (Excluded)

IP Code: 20

Dimensions: 471

Diffuser diameter: Ø 14cm

Diffuser height: 18.5cm

Cable length: 280cm

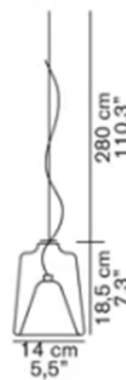
477

Diffuser diameter: Ø 24cm

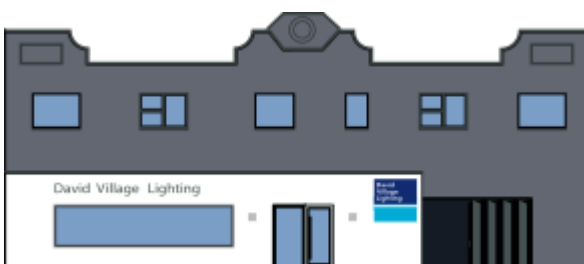
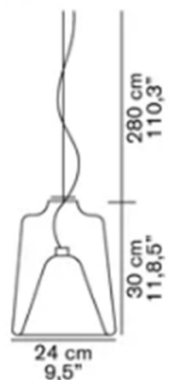
Diffuser height: 30cm

Cable length: 280cm

471



477



For all sales and technical enquiries, please contact:

+44 (0)114 263 4266

info@davidvillagelighting.co.uk

www.davidvillagelighting.co.uk