

oluce

LA9398

Oluce Lyndon 160/M Black Exterior Wall

SOURCE: <https://www.davidvillagelighting.co.uk/product/Oluce-Lyndon-160M-Black-Exterior-Wall/9886>



PRODUCT DESCRIPTION

Designer: Vico Magistretti

At least once in our lives, we have dreamt of owning a house surrounded by a large garden, even a park, and of strolling round it in the evening when dusk falls and peace and tranquillity returns. This is why Vico Magistretti designed Lyndon in 1977 - he wanted to recount a dream. The total simplicity of its support is combined with the elaborateness of its composite head, a cloud of transparent globes. Recalling times gone by and atmospheres from European capital cities at the end of the 19th century in a modern vein.

Outside wall lamp. Zinc-plated and black lacquered metal structure, globe in transparent polycarbonate. Slightly smaller than the Lyndon 160.

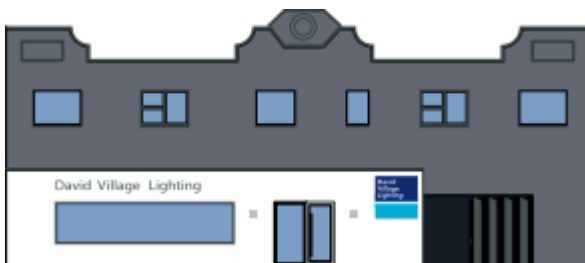
Please note, the IP rating for this product is IP23. Consult with your installer prior to purchase to ensure the installer is happy with the IP rating.

PRODUCT SPECIFICATION

Light Source: 1 x E27 100W max (excluded)

IP Code: 23

Dimensions: Height: 53cm
Diffuser diameter: 30cm
Projection: 40cm



For all sales and technical enquiries, please contact:

+44 (0)114 263 4266

info@davidvillagelighting.co.uk

www.davidvillagelighting.co.uk