



LucePlan Strip Wall/Ceiling Small

LA9178

SOURCE: <https://www.davidvillagelighting.co.uk/product/LucePlan-Strip-WallCeiling-Small/9378>

PRODUCT DESCRIPTION

Designer: Dante Donegani

LucePlan Strip Wall Small, painted aluminium finish, designed by Dante Donegani. Strip is a family of wall, ceiling and suspension lamps of very reduced thickness for linear fluorescent tubes, designed according to modularity standards allowing sequences and juxtapositionings according to geometries “in equilibrium”.

Its very few basic elements such as the diecast aluminium shoulders, the extruded aluminium distancer profiles, the electrical component housings and the opaline polycarbonate diffuser screens, allow modular lighting units of different dimensions and brightness to be created, whose common feature is their flat, low profile very close to the wall. This thickness reduced to the minimum makes Strip particularly suitable for places requiring unobtrusive lighting that adheres as closely as possible to ceilings and walls, for example in corridors and staircases.

Main image shows the small painted aluminium version. The LucePlan Strip wall/ceiling small is also available in a white or polish finish. Please contact the office for more details. Tel: 01142634266 or Email:

info@davidvillagelighting.co.uk

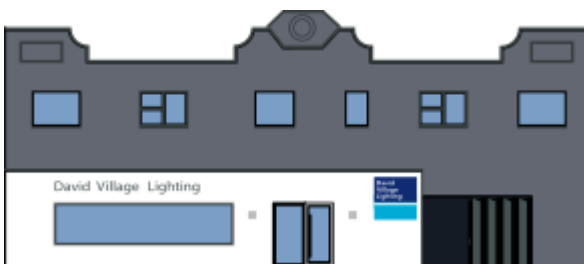


PRODUCT SPECIFICATION

Light Source: 2 x 14W FD T5 (excluded)

IP Code: 40

Dimensions: 74 cm length
10.5 cm width
7 cm depth



For all sales and technical enquiries, please contact:

+44 (0)114 263 4266

info@davidvillagelighting.co.uk

www.davidvillagelighting.co.uk