



LA9177

## Luceplan Trama Rise & Fall Suspension

SOURCE: <https://www.davidvillagelighting.co.uk/product/Luceplan-Trama-Rise-Fall-Suspension/9377>

### PRODUCT DESCRIPTION

**Designer:** Luciano Belistrini & Paola Longhi

### Trama Rise and Fall Suspension by Luceplan

Trama Rise and Fall Suspension by Luceplan was designed by Luciano Belistrini & Paola Longhi for Luceplan. The key feature of this light is its ability to be vertically adjusted by means of a spherical counterweight. It boasts an elegant and simple design and is made from high quality materials, a screen printed polycarbonate convex diffuser and an aluminium structure. The quality of the materials composing the diffuser ensures a strong light distribution, the silk screening enhances the quality of light that is dispersed. This avoids the harshness and false shadows created by direct light beams.

The Trama lights are almost weightless, meaning they can be used on plasterboard and fake ceilings. The cap is made of polycarbonate, which makes it very light compared to glass alternatives, which are heavy and extremely fragile.

The bulb is protected by a thin and well ventilated Pyrex glass to ensure durability.

Trama Rise and Fall Suspension is suitable for rooms with heights varying from 260cm to 340cm.

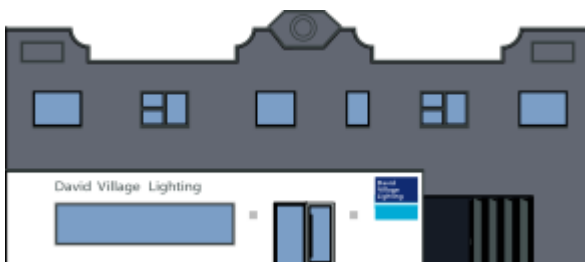
### PRODUCT SPECIFICATION

**Light Source:** 3 x Max 240W HDG R7s Dimmable (excluded)

**IP Code:** 20

**Dimming:** Dimmable using trailing edge dimming.

**Dimensions:** Shade: Ø64cm  
Min Drop Height: 80cm  
Max Drop Height: 170cm



**For all sales and technical enquiries, please contact:**

+44 (0)114 263 4266

[info@davidvillagelighting.co.uk](mailto:info@davidvillagelighting.co.uk)

[www.davidvillagelighting.co.uk](http://www.davidvillagelighting.co.uk)