



## Luceplan Mirandolina Table

LA9138

SOURCE: <https://www.davidvillagelighting.co.uk/product/Luceplan-Mirandolina-Table/9339>



### PRODUCT DESCRIPTION

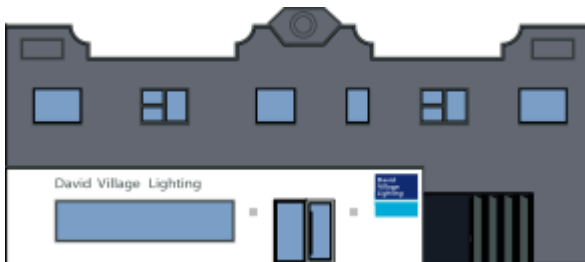
**Designer:** Paolo Rizzatto

A series of lights made of aluminium and blown glass developed around the formal and functional definition of the lamp holder, the real technical and conceptual barycentre of the project. Its volume highlights and includes various functions: it is at one and the same time the support for the bulb, the support for the diffuser, connection - through the stem - to the supporting base and it houses the button to switch on or regulate the intensity of the light.

The cylindrical form solves the assembly and disassembly of these components in an elementary way by means of a series of threaded ferrules.

This is the version with the dimmer included.

### PRODUCT SPECIFICATION



**For all sales and technical enquiries, please contact:**

+44 (0)114 263 4266

[info@davidvillagelighting.co.uk](mailto:info@davidvillagelighting.co.uk)

[www.davidvillagelighting.co.uk](http://www.davidvillagelighting.co.uk)