

FRITZ HANSEN

## Fritz Hansen Primula Bollard 1 Exterior

LA8642

SOURCE: <https://www.davidvillagelighting.co.uk/product/Fritz-Hansen-Primula-Bollard-1-Exterior/5938>



### PRODUCT DESCRIPTION

Primula was born of designer Knud Holscher's vision of creating an outdoor lighting series based on effective, non-glaring illumination that optimises the light from its source. Primula does this through a combination of optical elements that also utilises stray light.

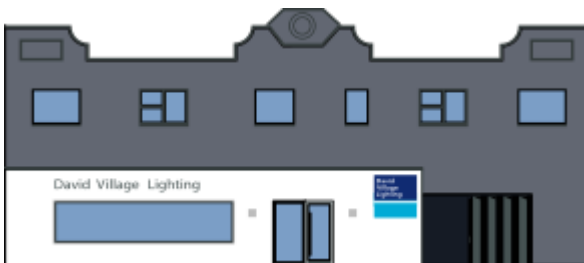
Knud Holscher developed the principles behind Primula in collaboration with the engineering firm, Hansen & Henneberg. The basic component is a symmetrical reflector that transmits light from the source directly to the top reflector, which ensures an effective distribution. The other optical element is white reflecting rings which utilise the light that does not hit the reflector. The stray light is collected and used by the white rings without affecting the lamp's efficiency. A lighted Primula has a unique identity, as the white rings appear to be suspended in air.

Primula's top and base are constructed of extruded aluminium, finished in flat, grey powdered lacquer. The shade is made of impact-resistant polycarbonate, and the white reflector rings of lacquered aluminium.

This advanced light technology ensures Primula an effective, circular illumination. Primula is also effective for directional lighting, in which case a shield is mounted on the top reflector.

### PRODUCT SPECIFICATION

IP Code: IP65



**For all sales and technical enquiries, please contact:**

+44 (0)114 263 4266

[info@davidvillagelighting.co.uk](mailto:info@davidvillagelighting.co.uk)

[www.davidvillagelighting.co.uk](http://www.davidvillagelighting.co.uk)