

FRITZ HANSEN

Fritz Hansen Brancusi Pendant

LA8618

SOURCE: <https://www.davidvillagelighting.co.uk/product/Fritz-Hansen-Brancusi-Pendant/5913>

PRODUCT DESCRIPTION

Designer: Cecilie Manz

Fritz Hansen Brancusi Pendant

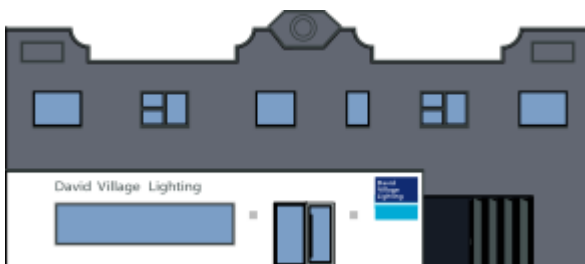


According to the designer Cecilie Manz, Brancusi meets a wide range of technical challenges in a pure, relaxed and rounded form. The smooth curves of this lamp form harmonious and organic lines in the room, and with a little imagination they are reminiscent of a water-polished stone. Brancusi is in its element in rooms with a high ceiling, where its superior light easily illuminates the entire room and its large surface complements the dimensions of the room.

Despite its considerable size, Brancusi apparently floats with ease. The soft lines and consistent use of white provide Brancusi with an extremely elegant appearance. The shade is made of tinted polycarbonate and finished with a sheet of tempered glass at the bottom. The silk-printed white circles on the glass soften the light emitted, helping to create the unique impression. To change the light source, simply loosen the three finger screws and open the glass, which is attached by an integrated hinge at the side of the shade.

Brancusi is designed to illuminate rooms with a high ceiling using a large, integrated aluminium reflector. The material, geometry and surface of this reflector ensure the effective and pleasant distribution of the light, which is precisely why Brancusi is so perfect for large rooms. It is available in two versions, so it can easily be used in all kinds of environment. The version with the E27 socket is recommended when a soft ambience is required, whereas the version with the G12 socket and metal-halogen light source is recommended for environments in which a high level of light and lower energy consumption is needed.

PRODUCT SPECIFICATION



For all sales and technical enquiries, please contact:

+44 (0)114 263 4266

info@davidvillagelighting.co.uk

www.davidvillagelighting.co.uk