

**louis poulsen**

**LA8580**

## Louis Poulsen PH 4/3 Table Lamp

SOURCE: <https://www.davidvillagelighting.co.uk/product/Louis-Poulsen-PH-43-Table-Lamp/5844>



### PRODUCT DESCRIPTION

**Designer:** Poul Henningsen

### PH 4/3 Table Lamp by Louis Poulsen

Designed by Poul Henningsen, the PH 4/3 table lamp is a beautiful and classic light that has a 3 shade system that Henningsen developed in the 1920s. Based on a logarithmic spiral, the shade conceals the light to create a soft, glare-free glow that is warming and inviting. The glass lampshade is paired with a chic chrome structure and black triangular fittings, a combination of vintage and modern elements.

The table lamp can be used in many different settings, being useful and decorative in bedrooms, lounges, offices and more, in professional spaces and homes. The PH 4/3 table light can be used on tables, shelves, side tables and desks to add a timeless finishing touch to your interior.

### PRODUCT SPECIFICATION

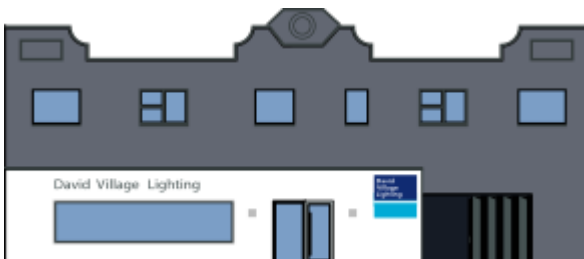
**Light Source:** 1 x Max 11W E27 LED (excluded)

**IP Code:** 20

**Dimming:** In line on/off switch included on cable.

**Dimensions:** Shade: Ø45cm  
Height: 54cm  
Base: Ø21cm

Cable Length: 290cm



**For all sales and technical enquiries, please contact:**

+44 (0)114 263 4266

[info@davidvillagelighting.co.uk](mailto:info@davidvillagelighting.co.uk)

[www.davidvillagelighting.co.uk](http://www.davidvillagelighting.co.uk)