

**louis poulsen**

## Louis Poulsen PH 2/1 Stem

**LA8561**

SOURCE: <https://www.davidvillagelighting.co.uk/product/Louis-Poulsen-PH-21-Stem/5824>



### PRODUCT DESCRIPTION

**Designer:** Poul Henningsen

### PH 2/1 Stem Fitting Light by Louis Poulsen

The PH 2/1 stem fitting is a beautiful light that uses a vintage design in a modern way. The shades were first developed by icon Poul Henningsen in 1925, who wanted to create a lampshade that concealed and diffused the light source to create a warm and comfortable glow. He designed a shade composed of 3 layers to achieve this and collaborated with Louis Poulsen for decades, creating many different types of lights suitable for many settings.

The PH 2/1 stem light was created in 2003, using Henningsen's legacy to produce a contemporary take on a chandelier whilst using timeless ideals. The stem fitting can be used in a wide variety of settings, such as dining rooms, lounges and receptions. Classic and stunning, the PH 2/1 stem will fill the room nicely with a soft and inviting illumination.

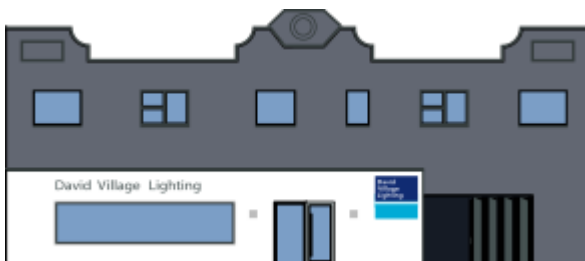
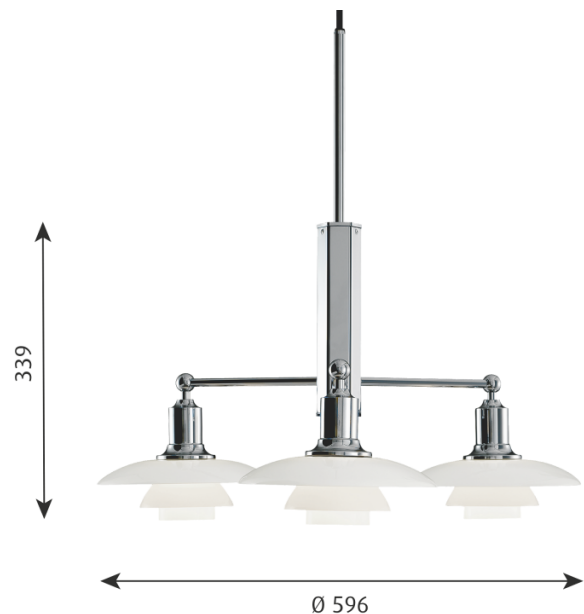
### PRODUCT SPECIFICATION

**Light Source:** 3 x Max 5W E14 LED (excluded)

**IP Code:** 20

**Dimming:** Dimmable via mains phase dimming.

**Dimensions:** Height: 33.9cm  
Width: 59.6cm



**For all sales and technical enquiries, please contact:**

+44 (0)114 263 4266

[info@davidvillagelighting.co.uk](mailto:info@davidvillagelighting.co.uk)

[www.davidvillagelighting.co.uk](http://www.davidvillagelighting.co.uk)