

FLOS

Flos Pochette Up / Down Wall Light

LA8412-H

SOURCE: <https://www.davidvillagelighting.co.uk/product/Flos-Pochette-Up-Down-Wall-Light/5619>



PRODUCT DESCRIPTION

Designer: Rodolfo Dordoni

Flos Pochette Up / Down Wall Light

The Pochette up/down wall light by Flos is an elegant, modern lamp who's minimal aesthetic allows the design to be placed in a wide variety of both commercial and residential settings, wonderfully adapting to the surrounding space. Providing both upwards and downwards light emission, the Pochette wall light creates a cosy atmosphere, washing surrounding walls with a warm light.

The designer of the Pochette, Rodolfo Dordoni, is renowned for his minimalist aesthetic, and just like Dordoni's most beloved designs such as the Ray collection, the Pochette makes good use of less material to create a piece that is decidedly efficient.

Available in three colour finishes; white, grey and chrome, the Pochette wall light makes a wonderful addition to a variety of interiors including hallways, living rooms and bedrooms.

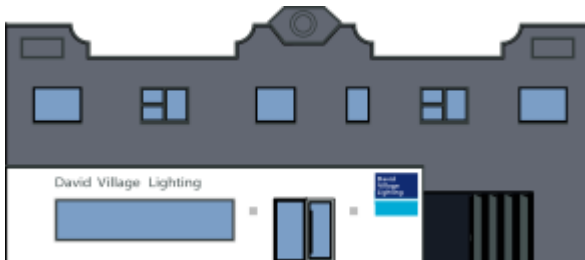
PRODUCT SPECIFICATION

Light Source: 1x R7s 200W max. (excluded)

IP Code: 20

Dimming: Dimmable via mains phase dimming

Dimensions: Height: 14.5cm
Width: 19.7cm
Depth: 9.9cm



For all sales and technical enquiries, please contact:

+44 (0)114 263 4266

info@davidvillagelighting.co.uk

www.davidvillagelighting.co.uk