

louis poulsen

LA8484

Louis Poulsen PH Snowball Pendant

SOURCE: <https://www.davidvillagelighting.co.uk/product/Louis-Poulsen-PH-Snowball-Pendant/5389>



PRODUCT DESCRIPTION

Designer: Poul Henningsen

PH Snowball Pendant Light by Louis Poulsen

The PH Snowball pendant was first designed in 1958 by Poul Henningsen and was exhibited at the Danish Museum of Decorative Art. Finding little success on its initial release, the pendant was shelved, being manufactured and relaunched in 1983. The pendant light is made from 8 shades structured into a rounded shape that is intriguing and alluring.

The lampshade helps to create a glare-free light, being a soft and welcoming shine that will flow throughout the room. The PH Snowball pendant light has a subtle white finish, making it perfect for many design schemes. The pendant lamp can be used in many settings, bedrooms, lounges, kitchens and more to create a warm ambience and effective, even glow.

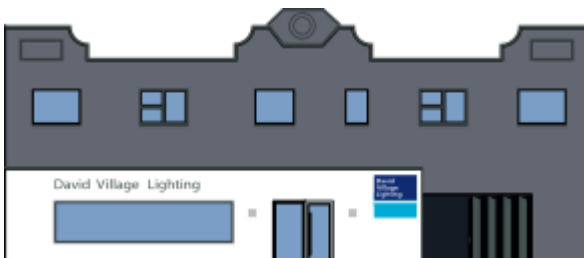
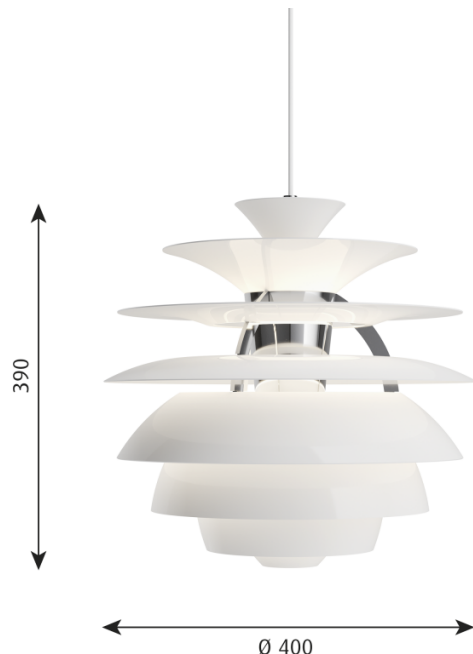
PRODUCT SPECIFICATION

Light Source: 1 x Max 12W E27 LED (excluded)

IP Code: 20

Dimming: Dimmable via mains phase dimming.

Dimensions: Shade: Ø40cm
Shade Height: 39cm



For all sales and technical enquiries, please contact:

+44 (0)114 263 4266

info@davidvillagelighting.co.uk

www.davidvillagelighting.co.uk