

louis poulsen

Louis Poulsen PH 4/3 Pendant

LA8479

SOURCE: <https://www.davidvillagelighting.co.uk/product/Louis-Poulsen-PH-43-Pendant/5385>



PRODUCT DESCRIPTION

Designer: Poul Henningsen

Louis Poulsen PH 4/3 Pendant Light

The Louis Poulsen PH 4/3 Pendant is an elegant and classic light that provides a warm light that both fills the room and directs downwards. The pendant light is made from a clever 3-shade system that was first designed by Poul Henningsen in 1925-26. The lampshade allows a glare-free glow that emanates outwards by concealing the light source. The design is timeless and will never go out of style, being a wonderful piece for any space.

The downward glow of the PH 4/3 Pendant Light makes it wonderful for use over tables and surfaces, looking particularly chic in kitchens and dining areas. The pendant can be used in many settings, however, and is suitable for both homes and commercial spaces.

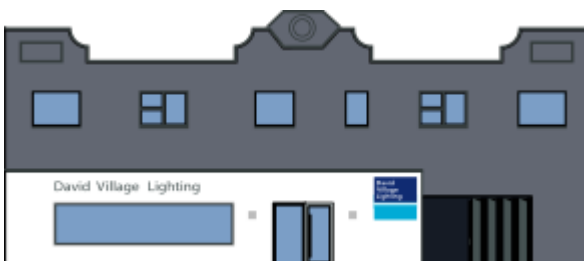
PRODUCT SPECIFICATION

- Light Source:** 1 x Max 11W E27 LED (Excluded)
- IP Code:** 20
- Dimming:** Dimmable via mains phase dimming.
- Dimensions:** Shade: Ø40cm
Shade Height: 20cm
Cable Length: 300cm

20cm



Ø40cm



For all sales and technical enquiries, please contact:

+44 (0)114 263 4266

info@davidvillagelighting.co.uk

www.davidvillagelighting.co.uk