

louis poulsen

Louis Poulsen PH 3/2 Pendant

LA8478

SOURCE: <https://www.davidvillagelighting.co.uk/product/Louis-Poulsen-PH-32-Pendant/5384>



PRODUCT DESCRIPTION

Designer: Poul Henningsen

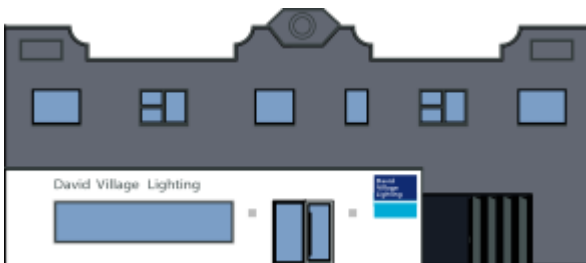
Louis Poulsen PH 3/2 Pendant Light

Based on a design by Poul Henningsen, the Louis Poulsen PH 3/2 Pendant is a beautiful light that has a vintage and timeless look. The lampshade is made from 3 separate glass parts, a system developed by Henningsen in 1925. He sought to create a shade that would conceal and diffuse the light source throughout the room.

This elegant pendant light has a wonderful silhouette and is available in 3 colour finishes to find the right match for your space. The PH 3/2 pendant light can be used alone in smaller rooms or in multiple in larger rooms to create a warm and comfortable atmosphere. You can also mix and match colours to create variety or put them into clusters to make a magnificent light feature.

PRODUCT SPECIFICATION

- Light Source:** 1 x Max 10W E27 LED (Excluded)
- IP Code:** 20
- Dimming:** Dimmable via mains phase dimming.
- Dimensions:** Shade: Ø29cm
Shade Height: 24.2cm
Cable Length: 300cm



For all sales and technical enquiries, please contact:

+44 (0)114 263 4266

info@davidvillagelighting.co.uk

www.davidvillagelighting.co.uk