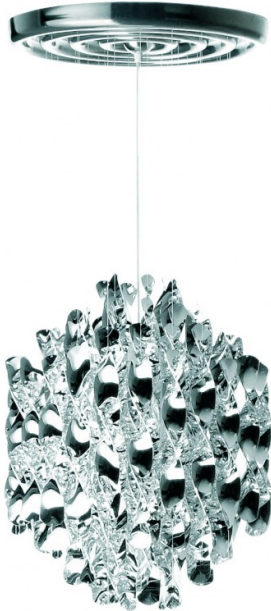




Verpan Spiral SP1 Pendant

LA8180

SOURCE: <https://www.davidvillagelighting.co.uk/product/Verpan-Spiral-SP1-Pendant/5225>



PRODUCT DESCRIPTION

Designer: Verner Panton

Verpan Spiral SP1 Pendant

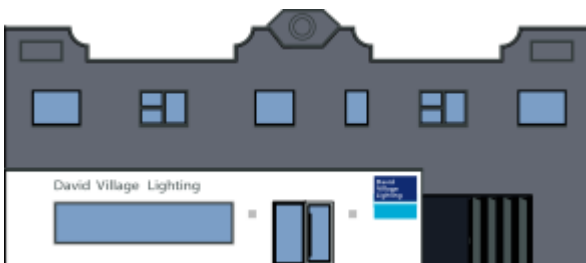
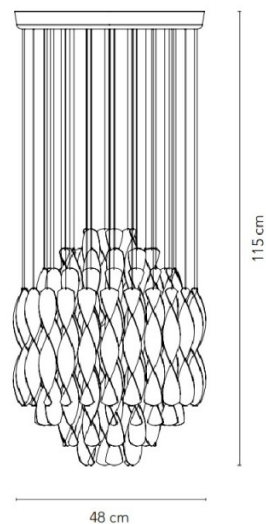
The Spiral SP1 Pendant by Verpan was designed by Verner Panton in 1969 with the aim of challenging everyday products around us and rethinking their design. This iconic pendant light is a great example of Panton's innovation in the design industry. The combination of light, movement and reflections in this ceiling light makes this design unique in the way it interacts with it's surroundings. The large metallic suspended pieces are strung up in a way that creates a spherical shade that provides a generous output of ambient light. The way in which the light interacts with the reflective metallic shade creates a modern playful character that makes this design so iconic.

The Verpan Spiral SP1 Pendant is available in two colours, which are gold and silver. These colours have become a classic aesthetic which is identifiably Panton.

PRODUCT SPECIFICATION

- Light Source:** 1 x max 60W E27 (excluded)
- IP Code:** 20
- Dimming:** Dimmable via mains phase dimming
- Dimensions:** 15 cm height
Ø 48 cm
400cm cable length

SP1



For all sales and technical enquiries, please contact:

+44 (0)114 263 4266

info@davidvillagelighting.co.uk

www.davidvillagelighting.co.uk