

VIBIA

LA3534

Vibia Ameba Modular LED Suspension

SOURCE: <https://www.davidvillagelighting.co.uk/product/Vibia-Ameba-Modular-LED-Suspension/5172>



PRODUCT DESCRIPTION

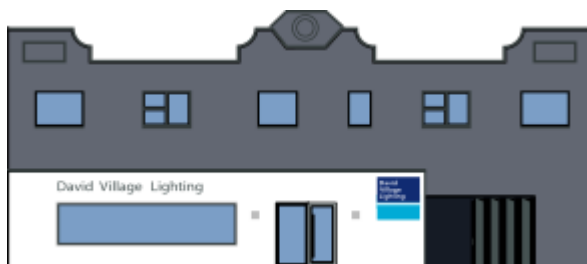
Ameba Modular LED Suspension Light by Vibia

Designed by Pete Sans, the Ameba suspension is a modular light that can be tailored to your specific needs by combining several Ameba elements. The composition of a suspension light is made using the five singular Ameba lamps (2202, 2207, 2212, 2217 and 2222) to create an interesting and eye-catching display that is completely unique to you.

An innovative and forward-thinking way of using light, the Ameba suspension light has integrated LED light sources for a long-lasting and effective glow, perfect for illuminating large areas and spaces. Thriving in tall and big rooms, this suspension will surely draw attention and can be used for functional and efficient lighting in professional spaces and projects. Available in a white or graphite colour finish.

PRODUCT SPECIFICATION

Light Source:	2202 - 2 x 9.2W, 3000K, 1554 lumens 2207 - 4 x 9.2W, 3000K, 3108 lumens 2212 - 3 x 9.2W, 3000K, 2331 lumens 2217 - 3 x 9.2W, 3000K, 2331 lumens 2222 - 1 x 13.5W, 3000K, 998 lumens
IP Code:	20
Dimming:	Dimmable via Dali dimming systems. Please consult your electrician, additional wiring may be required on site.
Dimensions:	2202: 51cm length 35cm width 28cm height 2207: 100cm length 61cm width 28cm height 2212: 66cm length 53cm width 28cm height 2217: 71cm length 64cm width 28cm height 2222: 48cm length 41cm width 28cm height



For all sales and technical enquiries, please contact:

+44 (0)114 263 4266

info@davidvillagelighting.co.uk

www.davidvillagelighting.co.uk