

FLOS

Flos Splügen Brau Pendant

LA8296

SOURCE: <https://www.davidvillagelighting.co.uk/product/Flos-Splügen-Brau-Pendant/4951>



PRODUCT DESCRIPTION

Designer: Achille Castiglioni & Pier Giacomo Castiglioni

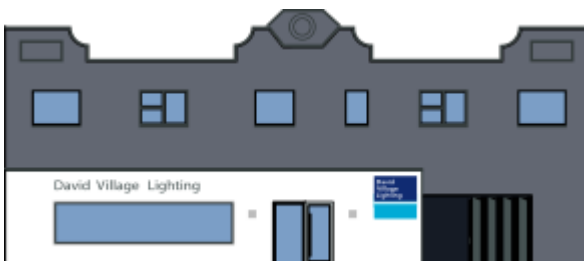
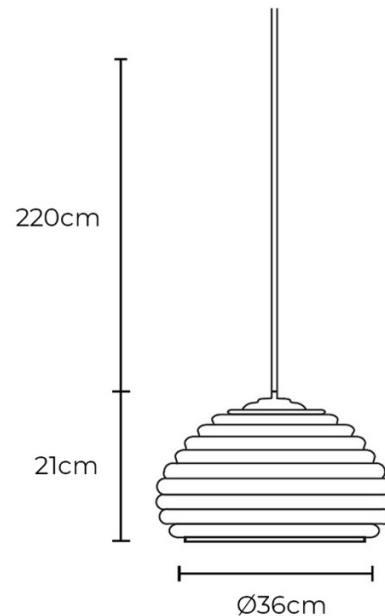
Flos Splügen Brau Pendant

The Flos Splügen Brau Pendant is a suspension that harnesses a contemporary aesthetic and provides direct downlighting. Designed by brothers Achille and Pier Giacomo Castiglioni in 1960, the Splügen Brau Pendant was originally designed for the Splügen Bräu Bar, an interior design icon in Milan, where everyone seemed like a leading character. It has since become a permanent fitting in the Flos catalogue and is used in commercial and residential spaces alike.

The spun aluminium shade is indicative of the time period in which it was designed, and the beehive silhouette makes the pendant vibrantly charming. The timeless Flos Splügen Brau Pendant Light comes complete with a steel ceiling fitting and white gloss finished canopy, perfect for use in a kitchen, dining space, stairwell or general living area.

PRODUCT SPECIFICATION

Light Source: 1 x Max 11W E27 LED (Excluded)
IP Code: 20
Dimming: Dimmable via mains phase dimming.
Dimensions: Ø36cm
 Shade Height: 21cm
 Cable Length: 220cm



For all sales and technical enquiries, please contact:

+44 (0)114 263 4266

info@davidvillagelighting.co.uk

www.davidvillagelighting.co.uk