

Artemide Talo Wall Light

LA8051

SOURCE: <https://www.davidvillagelighting.co.uk/product/Artemide-Talo-Wall-Light/347>

PRODUCT DESCRIPTION

Designer: Neil Poulton

Artemide Talo Wall Light

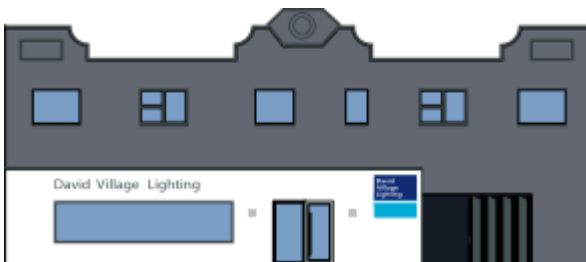
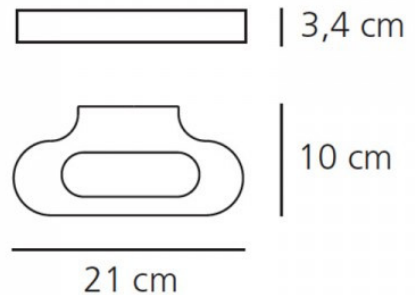
The Artemide Talo Wall Light, designed by Neil Poulton, translates the same minimalist philosophy of the [suspended version](#) into a compact, architectural form that integrates seamlessly with the wall. Its slim, elongated aluminium body presents a clean, geometric profile that allows the wall light to complement a wide range of interiors without dominating the space.

The Talo Wall Light delivers both direct and indirect illumination, casting light upward and downward to create a balanced, ambient glow. This dual emission enhances visual comfort while adding depth to walls, making it particularly effective in corridors, living areas, offices, or hospitality settings. Expressing a design driven by simplicity and adaptability, the Talo Wall Light can act as a primary light source or an effective alternative to central ceiling lighting.



PRODUCT SPECIFICATION

- Light Source:** 1 x Max 11W LED DIM R7s (Excluded)
- IP Code:** 20
- Dimming:** Dimmable via mains phase dimming.
- Dimensions:** Width: 21cm
Depth: 10cm
Height: 3.4cm



For all sales and technical enquiries, please contact:

+44 (0)114 263 4266

info@davidvillagelighting.co.uk

www.davidvillagelighting.co.uk