

**Artemide**

LA5627/SA

## Artemide Calipso Linear Standalone LED Suspension

SOURCE: <https://www.davidvillagelighting.co.uk/product/Artemide-Calipso-Linear-Standalone-LED-Suspension/21635>



### PRODUCT DESCRIPTION

#### Calipso Linear Standalone LED Suspension Light by Artemide

Designed by Neil Poulton, the Calipso Linear suspension is characterised by a complex honeycomb grill that draws the eye and creates a geometric beauty. The honeycomb pattern was generated by a photo of the moon being fed into an image-based algorithm that is then translated in reality by using different sized tubes that look random in configuration.

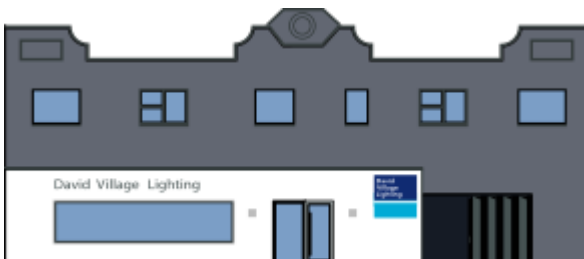
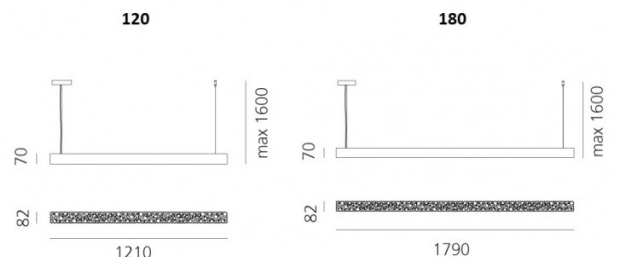
The alluring pattern of the Calipso Standalone suspension light also serves for function as it provides an evenly spread illumination that is comfortable and inviting. Perfect for both homes and professional settings, this suspension lamp comes in a simple white colour finish and 2 sizes, the smaller 120 and the larger 180.

### PRODUCT SPECIFICATION

**Light** 120 - 43W, 3000K, 2985 lumens  
**Source:** 180 - 63W, 3000K, 4477 lumens  
**Dimming:** Dimmable via Dali dimming systems / Push to make/ switch dimming, dimmable using push to make switches. Please consult your electrician, additional wiring may be required on site.

**Dimensions: 120:**  
 121cm length  
 8.2cm width  
 7cm height  
 160cm max. drop

**180:**  
 179cm length  
 8.2cm width  
 7cm height  
 160cm max. drop



**For all sales and technical enquiries, please contact:**

+44 (0)114 263 4266

[info@davidvillagelighting.co.uk](mailto:info@davidvillagelighting.co.uk)

[www.davidvillagelighting.co.uk](http://www.davidvillagelighting.co.uk)