

# Axolight

LA5643/M

## Axolight Jewel Mono LED Suspension

SOURCE: <https://www.davidvillagelighting.co.uk/product/Axolight-Jewel-Mono-LED-Suspension/21512>

### PRODUCT DESCRIPTION

**Designer:** Yonoh Design Studio

### Jewel Mono LED Suspension Light by Axolight

Designed by the renowned Studio Yonoh, the Jewel Mono LED suspension is the newest addition to the [Axolight Jewel collection](#). The Jewel Mono pendant is a minimalist and modern light that has an aluminium cone which is held by a recycled plastic arch. The sleek and simple design produces an elegant and chic aesthetic that can be used in many interiors.

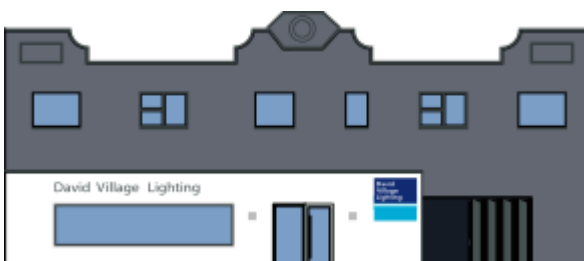
The Jewel Mono pendant lamp has an integrated LED which is available with either a 12° or a 38° beam angle. The 12° beam produces a very narrow beam of light that is perfect for highlighting features in the room or as an overhead light for tables and surfaces when used in multiple. The 38° beam is wider and less concentrated than the 12°, so could be used for lounges and offices when used in multiple for a more general light. This suspension light has a lampshade paired with a coloured arch with 3 dual colours available, gold/black, black/black and black/grey.

**The Jewel Mono pendant light is also available in a version with a recessed ceiling installation. Please [contact us](#) for more information and prices.**



### PRODUCT SPECIFICATION

<b>Light Source:</b>	9W, 2700K, 700 lumens
<b>IP Code:</b>	20
<b>Dimming:</b>	Dimmable via 1-10v dimming systems. Please consult your electrician, additional wiring may be required on site.
<b>Dimensions:</b>	Ø9cm shade 9cm shade height Ø6.3cm ceiling canopy 12.5cm ceiling canopy height 200cm max. cable length



**For all sales and technical enquiries, please contact:**

+44 (0)114 263 4266

[info@davidvillagelighting.co.uk](mailto:info@davidvillagelighting.co.uk)

[www.davidvillagelighting.co.uk](http://www.davidvillagelighting.co.uk)