

**NEMO**

**Nemo Lighting Dabliu LED  
Pendant**

LA10374

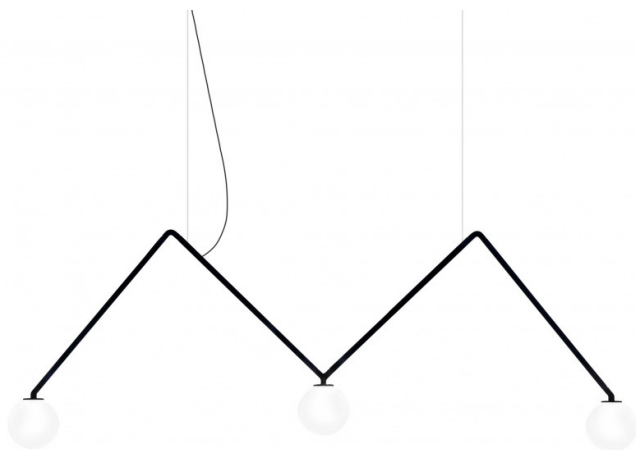
SOURCE: <https://www.davidvillagelighting.co.uk/product/Nemo-Lighting-Dabliu-LED-Pendant/21426>

**PRODUCT DESCRIPTION**

**Dabliu LED Pendant Light by Nemo Lighting**

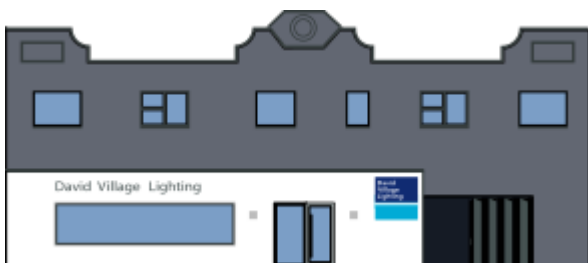
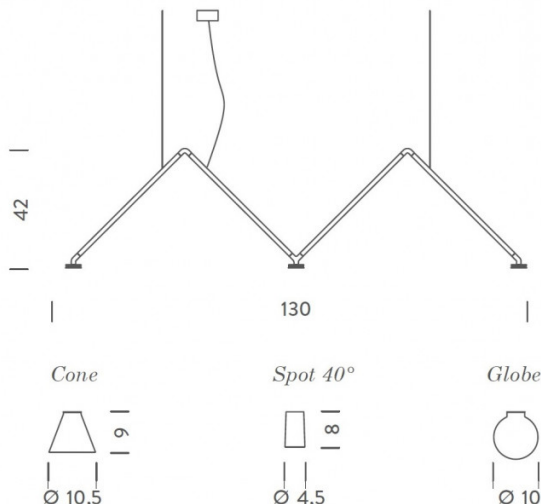
The Dabliu pendant is a geometric and minimalist wonder, with an aluminium structure that holds 3 lights in a triangular shape. The black structure holds either a cone, globe or spot lampshade, allowing for different functions and uses. The contemporary nature of this LED pendant light creates an eye-catching aesthetic in the room and the dimmable function means you can create the exact ambience needed for your space.

The spot 40° version allows for a direct and intense light flow, whereas the cone and globe versions emit a more diffused and warm glow that spreads out into the room. The Dabliu pendant lamp can be used in many interiors, being suitable for both homes and professional spaces. Hang over tables or use as a main light for whatever lighting need you have.



**PRODUCT SPECIFICATION**

- Light Source:** 3 x 5W, 3000K, 400 lumens
  - IP Code:** 20
  - Dimming:** Dimmable via 1-10v dimming systems. Please consult your electrician, additional wiring may be required on site.
  - Dimensions:**
    - Cone** - Ø10.5cm, H 6cm
    - Globe** - Ø10cm
    - Spot 40°** - Ø4.5cm, H 8cm
- 130cm width  
42cm height



**For all sales and technical enquiries, please contact:**

+44 (0)114 263 4266

info@davidvillagelighting.co.uk

www.davidvillagelighting.co.uk