

Artemide

LA10363

Artemide Arrival LED Table Lamp

SOURCE: <https://www.davidvillagelighting.co.uk/product/Artemide-Arrival-LED-Table-Lamp/21348>



PRODUCT DESCRIPTION

Designer: Ludovica & Roberto Palomba

Arrival LED Table Lamp by Artemide

A new release from the Artemide brand, the Arrival table lamp was designed by Ludovica + Roberto Palomba. Made from aluminium, the table lamp has a sculptural silhouette as three branches leave one origin to meet back again in a graceful loop. The light source sits discreetly in each arm, creating a beautiful illumination that fills the room well.

The Arrival LED table light is available in a wonderful gold or matt black finish which are both elegant and sophisticated and will look stunning in many interiors. The table light can be used on tables, desks and side tables to provide a warm glow. The lamp also has a touch dimmer to set the right tone and the design will draw the eye and create a interesting dynamic in any space.

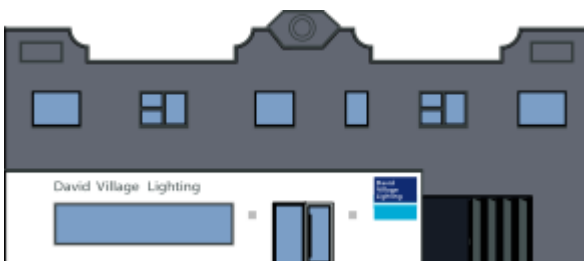
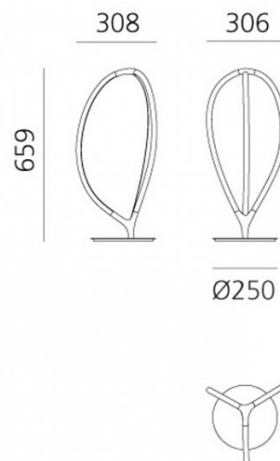
PRODUCT SPECIFICATION

Light Source: 17W, 3000K, 555 lumens

IP Code: 20

Dimming: Integrated dimmer on the product

Dimensions: 65.9cm height
30.8cm length
30.6cm width
Ø25cm base



For all sales and technical enquiries, please contact:

+44 (0)114 263 4266

info@davidvillagelighting.co.uk

www.davidvillagelighting.co.uk