

**louis poulsen**

**LA8487/320**

## Louis Poulsen Panthella 320 Table Lamp

SOURCE: <https://www.davidvillagelighting.co.uk/product/Louis-Poulsen-Panthella-320-Table-Lamp/21258>

### PRODUCT DESCRIPTION

**Designer:** Verner Panton

### Louis Poulsen Panthella 320 Table Lamp

The Panthella 320 table lamp is a new size introduced by Louis Poulsen as part of the [Panthella collection](#) on the 50th anniversary of the first creation of the iconic [Panthella table lamp](#). In this size, which is smaller than the standard version but bigger than the mini version, the 320 table lamp retains an organic and natural shape that is alluring and stylish.

The Panthella 320 table light is available in 4 colours, white opal, brass, opal grey or chrome, with the brass and chrome finishes emitting a downward glow whilst the white opal finish emits a glow outwards from the shade as well as down. The design means the glow also reflects the body, creating a warming illumination that sets a welcoming and atmospheric ambience. Do not miss out on this iconic design by renowned designer Verner Panton!



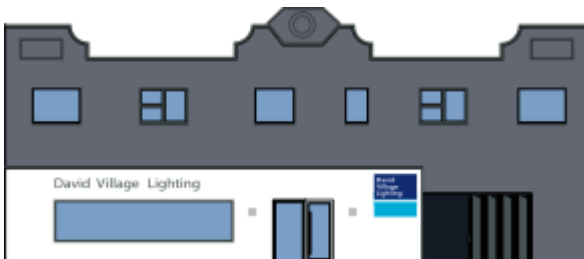
### PRODUCT SPECIFICATION

**Light Source:** 1 x Max 4W E14 LED (excluded)

**IP Code:** 20

**Dimming:** In line on/off switch included on cable.

**Dimensions:** Shade: Ø32cm  
Height: 34.8cm  
Base: Ø20cm  
Cable Length: 250cm



**For all sales and technical enquiries, please contact:**

+44 (0)114 263 4266

[info@davidvillagelighting.co.uk](mailto:info@davidvillagelighting.co.uk)

[www.davidvillagelighting.co.uk](http://www.davidvillagelighting.co.uk)