



# Audo Copenhagen Hashira Cluster Pendant Light

LA10176/C

SOURCE: <https://www.davidvillagelighting.co.uk/product/audo-copenhagen-hashira-cluster-pendant-light/21228>



## PRODUCT DESCRIPTION

Designer: Norm Architects

### Hashira Cluster Pendant Light by Audo Copenhagen

A part of the [Audo Copenhagen Hashira collection](#), the Hashira cluster pendant is made up of 3 pendant lights, available in a small or large size. Inspired by traditional rice paper Japanese lanterns, designer Norm Architects have modernised the design by creating a shade made from fabric and a steel frame.

The fabric lampshade conceals the light source and creates a warming and soft glow, perfect for many settings. The simplistic and contemporary aesthetic of the Hashira cluster makes it very adaptable and can be used in homes and public spaces. Suitable as a main light in your interior, you can use alone or mix and match sizes to make the best use of the room.

## PRODUCT SPECIFICATION

**Light Source:** **Small** - 3 x Max 40W E27 (excluded)  
**Large** - 6 x Max 40W E27 (excluded)

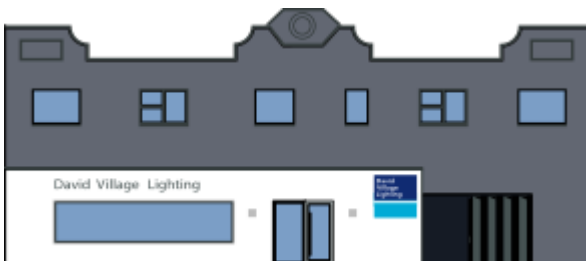
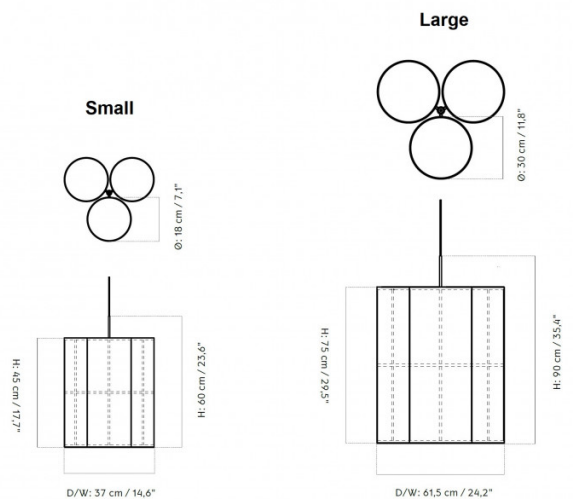
**IP Code:** 20

**Dimming:** Dimmable via mains phase dimming.

**Dimensions: Small:**  
 Each Shade: Ø18cm  
 Width: 37cm  
 Height: 45cm

**Large:**  
 Each Shade: Ø30cm  
 Width: 61.5cm  
 Height: 75cm

Ceiling Canopy: Ø11.5cm  
 Ceiling Canopy Height: 3.8cm  
 Cable Length: 500cm



For all sales and technical enquiries, please contact:

+44 (0)114 263 4266

info@davidvillagelighting.co.uk

www.davidvillagelighting.co.uk