

louis poulsen

Louis Poulsen PH Snowball LED Pendant

LA8484/LED

SOURCE: <https://www.davidvillagelighting.co.uk/product/Louis-Poulsen-PH-Snowball-LED-Pendant/20892>



PRODUCT DESCRIPTION

Designer: Poul Henningsen

Louis Poulsen PH Snowball LED Pendant Light

Designed by Poul Henningsen in 1958, the PH Snowball Pendant has been reimagined with an LED light source. Originally exhibited at the Danish Museum of Decorative Art and being shelved after not receiving much attention, the pendant was largely forgotten until it was relaunched in 1983.

The Louis Poulsen PH Snowball LED Pendant is made from 8 shades with a white finish, which helps to softly reflect the glow, creating a glare-free and effective light. The integrated LED light source is dimmable, so you can easily create the ambience you want. The sleek white finish allows this lighting solution to adapt to a variety of interior styles. Useful for many settings, both in the home and in commercial interiors, the PH Snowball creates a wonderful atmosphere with timeless and chic design.

PRODUCT SPECIFICATION

Light Source: 41W, 3000K, 894 Lumens

IP Code: 20

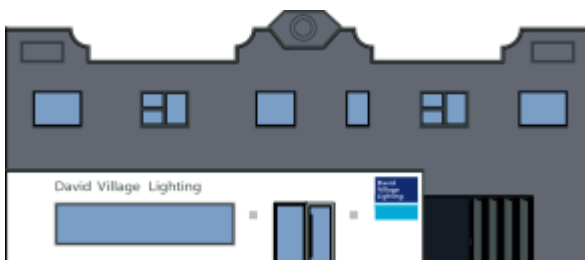
Dimming: Dimmable via mains phase dimming.

Dimensions: Shade: Ø40cm
Shade Height: 39cm
Cable Length: 400cm

39cm



40cm



For all sales and technical enquiries, please contact:

+44 (0)114 263 4266

info@davidvillagelighting.co.uk

www.davidvillagelighting.co.uk