

LODES

Lodes Sky-Fall LED Pendant

LA10215

SOURCE: <https://www.davidvillagelighting.co.uk/product/Lodes-Sky-Fall-LED-Pendant/20638>

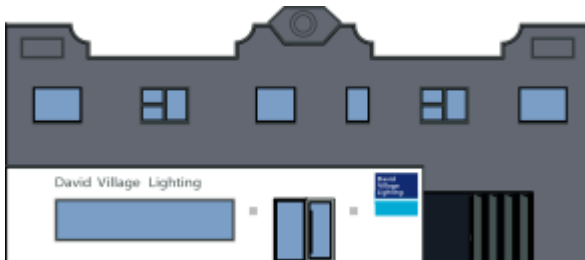
PRODUCT DESCRIPTION

Sky-Fall Pendant Light by Lodes

The Lodes Sky-Fall pendant is a beautiful and elegant pendant, made from a chrome metal structure and blown glass. Appearing metallic when switched off, the diffuser becomes more transparent as the light is switched on, making a lovely, warming effect. The pendant is characterised by its globular shape, having smooth, curved lines that are striking and eye-catching.

The Sky-Fall pendant light has 2 built in LED lights which make the light shine both in the top and the bottom, creating an all-round illumination. The downward lightbulb is directed which is good for lighting tables and lounge spaces, whilst the top lightbulb creates an indirect ambient light which makes the room glow. Suitable for commercial and domestic use, this pendant light comes in 4 glass finishes that are all luxurious and stunning. Available in 2 sizes, you can mix and match size and colour to create a wonderful cluster or row, or have one for a feature light suited for any space.

PRODUCT SPECIFICATION

Light Source: 2 x 10W, 2700K, 1815 lumens**IP Code:** 20**Dimming:** Dimmable via Triac dimming**Dimensions:** Medium - Ø22cm, H 38cm
Large - Ø36cm, H 52cmØ12cm ceiling canopy
250cm max cable length**For all sales and technical enquiries, please contact:**

+44 (0)114 263 4266

info@davidvillagelighting.co.ukwww.davidvillagelighting.co.uk