

FRITZ HANSEN

Fritz Hansen Silhuet Pendant

LA10207

SOURCE: <https://www.davidvillagelighting.co.uk/product/Fritz-Hansen-Silhuet-Pendant/20627>

PRODUCT DESCRIPTION

Designer: Jo Hammerborg

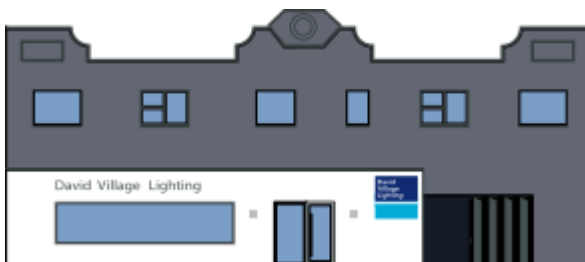
Silhuet Pendant Light by Fritz Hansen

The Fritz Hansen Silhuet pendant is a **new special edition light for 2020**, to celebrate the 100th birthday of the renowned icon Jo Hammerborg. A Danish designer, Hammerborg made waves in the mid 20th century, creating over 180 light designs with several becoming internationally acclaimed, changing the scope of Danish lighting for the better. In 2013, Fritz Hansen took on the task of relaunching his ever-popular Orient pendant and now they commemorate him by releasing another one of his iconic pieces, the Silhuet.

The Silhuet pendant light is characterised by its sleek, curved lines, using simple and minimalist ideas to create a beautiful and stunning light. This light is available in both a brushed and polished brass, lending a touch of sophistication and extravagance in a subtle way. The pendant emits a soft downward directed light, making it particularly good for hanging over tables. The subtle design makes the Silhuet pendant light suitable for a wide variety of settings and will look stylish and timeless in any space. Each Silhuet also comes with a Jo Hammerborg 100 years signature on the inside of the lampshade, making this pendant truly a collectors item.

PRODUCT SPECIFICATION

IP Code: 20
Dimming: Dimmable via mains phase dimming.
Dimensions: Shade: Ø29.5cm
Height: 32.8cm



For all sales and technical enquiries, please contact:

+44 (0)114 263 4266

info@davidvillagelighting.co.uk

www.davidvillagelighting.co.uk