

NORR11

NORR11 Le Six Pendant

LA10193

SOURCE: <https://www.davidvillagelighting.co.uk/product/NORR11-Le-Six-Pendant/20589>



PRODUCT DESCRIPTION

Designer: 349

Le Six Pendant Light by NORR11

Inspired by Art Nouveau design, Kristian Sofus Hansen and Tommy Hyldahl have developed the [NORR11 Le Six collection](#), a range that features a lampshade with curved lines that is indicative of the movement. Their modern approach to classic design has resulted in an elegant and stylish pendant light that will impress and inspire.

The Le Six pendant has a downward light that scatters nicely thanks to the trumpet like shape of the shade and also comes in 3 colours that are both chic and deluxe, making a statement in the room. This pendant can work well as a singular light hanging over a table or as a series or cluster to create a bigger effect. Suitable for home and commercial settings, the Le Six pendant light is perfect for lounges, dining rooms, kitchens and bedrooms.

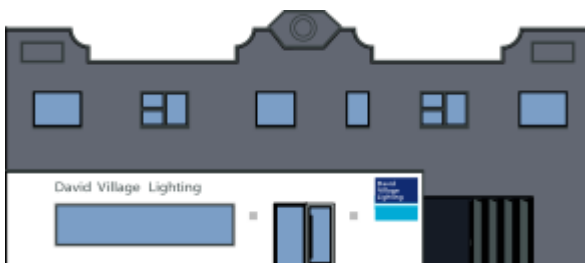
PRODUCT SPECIFICATION

Light Source: 1 x Max 25W E27 (excluded)

IP Code: 20

Dimming: Dimmable via mains phase dimming.

Dimensions: Shade: Ø12cm
Height: 32cm height
Cable Length: 200cm



For all sales and technical enquiries, please contact:

+44 (0)114 263 4266

info@davidvillagelighting.co.uk

www.davidvillagelighting.co.uk