

NORR11

NORR11 Deco Pendant

LA10188

SOURCE: <https://www.davidvillagelighting.co.uk/product/NORR11-Deco-Pendant/20577>



PRODUCT DESCRIPTION

Designer: 349

Deco Pendant Light by NORR11

The Deco pendant light is a part of the [NORR11 Deco collection](https://www.davidvillagelighting.co.uk/product/NORR11-Deco-Pendant/20577), an exclusive range designed by Kristian Sofus Hansen and Tommy Hyldahl. Inspired by the wall lights commonly seen in Art Deco hotels from the 1930s, the pair have designed a pendant light with a tubular opal glass shade.

The pendant produces a diffused light that still glimmers due to the rippled surface of the lampshade. The pendant also has an adjustable steel wire, meaning you can hang the light either vertically or horizontally making this a very versatile light. Both classic and modern in look, the Deco pendant light can be used in many settings and works particularly well hanging over a table. The adjustable wire means you can also buy multiple pendants to create a hanging design, bringing creativity and uniqueness to your space.

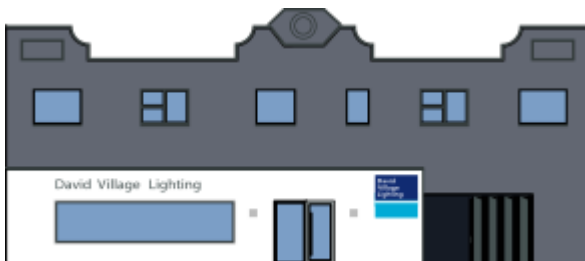
PRODUCT SPECIFICATION

Light Source: 2 x Max 15W E14 (excluded)

IP Code: 20

Dimming: Dimmable via mains phase dimming.

Dimensions: Ø7cm
Height: 48cm
Cable Length: 400cm



For all sales and technical enquiries, please contact:

+44 (0)114 263 4266

info@davidvillagelighting.co.uk

www.davidvillagelighting.co.uk