

NORR11

NORR11 Yo Yo Pendant

LA10186

SOURCE: <https://www.davidvillagelighting.co.uk/product/NORR11-Yo-Yo-Pendant/20575>



PRODUCT DESCRIPTION

Designer: 349

Yo-Yo Pendant Light by NORR11

Designed by Kristian Sofus Hansen and Tommy Hyldahl the Yo-Yo pendant light takes its design from the yo-yo. Two opal glass shades are attached opposite each other, suspended from the cable by an iron frame resulting in a lampshade that is both modern and chic in look. The rounded and sleek lines make the Yo-Yo pendant a simplistic and stylish light that creates a warm illumination.

The lampshade completely diffuses the lights, making this pendant a nice ambient light with a bright glow. This pendant light looks best in kitchen, dining, lounge and reception rooms and works particularly well hanging over a table as a row of pendants. With two sizes you can mix the sizes to create a beautiful cluster feature in your home or commercial space. Match with other lights from the [NORR11 Yo-Yo collection](#) to create a big impact.

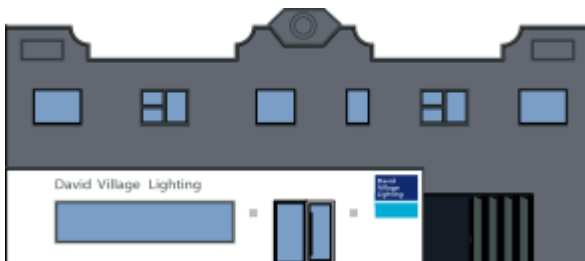
PRODUCT SPECIFICATION

Light Source: Small - 1 x E14 LED 25W max (excluded)
Big - 1 x E27 LED 25W max (excluded)

IP Code: 20

Dimming: Dimmable via mains phase dimming

Dimensions: Small - Ø24cm, H 16cm
Big - Ø49, H 31.5cm



For all sales and technical enquiries, please contact:

+44 (0)114 263 4266

info@davidvillagelighting.co.uk

www.davidvillagelighting.co.uk