

# DCW éditions Les Doubles de Gras N°203

LA3986/D

SOURCE: <https://www.davidvillagelighting.co.uk/product/DCW-ditions-Les-Doubles-de-Gras-N203/20543>

## PRODUCT DESCRIPTION

Designer: Bernard-Albin Gras

### N°203 Double Lampe Gras Wall Light by DCW éditions

This double version of the [N°203 Lampe Gras wall light](#) is ideal as a reading light over a double bed, above a sofa or anywhere where two wall lights are required but only one power output is available.

The arms of the 203 Double Wall Light are extendable with a minimum reach of 49cm and maximum reach of 76cm. The shade can be adjusted upwards and downwards to direct light where required.

The shades are available in various finishes including a white polycarbonate shade which convincingly mimics the appearance and effect of frosted glass but without the weight. The polycarbonate shade offers both directional light and diffused light into the room through the semi-opaque shade. The other finishes provide directional light.

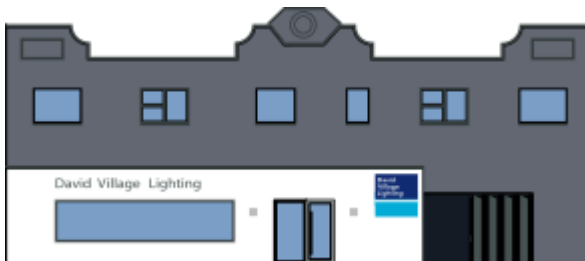
The original Lampe Gras Lights were designed In 1921 by Bernard-Albin GRAS for use in offices and in industrial environments. Today the collection from DCW éditions includes a range of ceiling lights, pendants and single and double wall lights; each variation in the collection is named with a number.



## PRODUCT SPECIFICATION

**Light Source:** 2x E27 15W max. (excluded)

**Dimensions:** Arm: 2 x min. 492 mm, max. 762 mm  
Shade: Ø153mm, Height 152mm



**For all sales and technical enquiries, please contact:**

+44 (0)114 263 4266

[info@davidvillagelighting.co.uk](mailto:info@davidvillagelighting.co.uk)

[www.davidvillagelighting.co.uk](http://www.davidvillagelighting.co.uk)