

ANGLEPOISE®

Anglepoise Type 80 Desk Lamp

LA10167

SOURCE: <https://www.davidvillagelighting.co.uk/product/Anglepoise-Type-80-Desk-Lamp/20532>



PRODUCT DESCRIPTION

Designer: Sir Kenneth Grange

Type 80 Desk and Table Lamp by Anglepoise

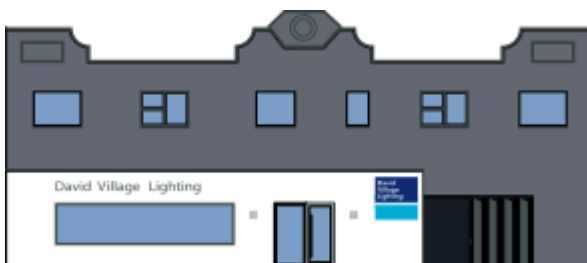
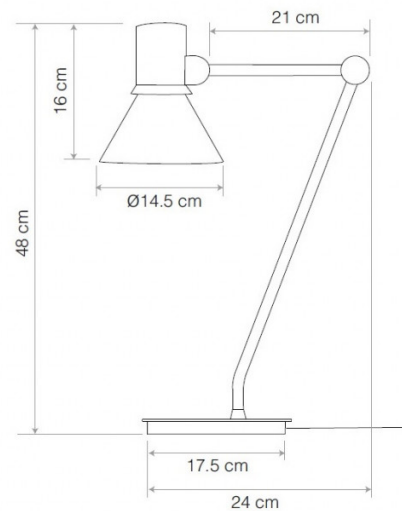
The Anglepoise Type 80 Desk Lamp is part of the [Anglepoise Type 80 collection](#) designed in 2019 by industrial product designer Sir Kenneth Grange. The lamp features a conical shade – a shape which Sir Kenneth Grange describes as a “truly iconic element” in lighting design. To enhance the graphic profile of the conical shade, light escapes from the top of the cone, creating a halo effect. A push on/off button sits on the top of the shade.

Unlike other Anglepoise lamps where the cable is a visible feature on the body or shade of the lamp, the Type 80 Desk lamp’s cable is discretely routed through its arm creating a sleeker profile. Two sprung joints enable the lamp’s arm and shade to be angled up and down into the desired position.

PRODUCT SPECIFICATION

- Light Source:** 1 x max 6W E27 LED (included)
- IP Code:** 20
- Dimming:** Integrated on/off switch on the product
- Dimensions:**
 - Ø14.5cm shade
 - 16cm shade height
 - 68cm max. vertical reach
 - 17.5cm x 12.5cm (L x W) base
 - 180cm cable length

Max Vertical Reach 68 cm



For all sales and technical enquiries, please contact:

+44 (0)114 263 4266

info@davidvillagelighting.co.uk

www.davidvillagelighting.co.uk