



LA10024/F

Boa Curved Floor Lamp by Orsjo Belysning

SOURCE: <https://www.davidvillagelighting.co.uk/product/boa-curved-floor-lamp-by-orsjo-belysning/20254>

PRODUCT DESCRIPTION

Boa Cuved floor lamp by Orsjo Belysning

Designed by Gert Wingårdh & Sara Helder for Orsjo Belysning, the Boa range is bold in its presence and provides focused downlight to areas below.

Inspired by the snake, Boa has an elongated form and covered in black leather, resulting in a sleek and contemporary style. The trumpeted end creates a wider beam of downward focused light to give light exactly where it is required. The curved lamp head is perfect for reading or tasks. Boa is a versatile collection which is perfect in both domestic and commercial interiors.

This collection also comprises of the vertical [Boa floor lamp](#) producing uplight, as well as a minimal [Boa pendant](#) creating focused downlight.

Care advice:

Wipe the surface with a dry soft cloth.

Do not use water or strong solvents, it will damage the surface.

Materials:

Leather with metal shade & base

Lamp excluded

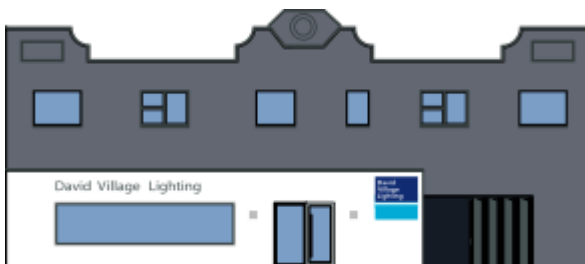


PRODUCT SPECIFICATION

Light Source: 3.1w G4 LED (excluded)

Dimming: Touch dimmer on the body of the lamp

Dimensions: 10 cm shade dia
164 cm height
40 cm base dia



For all sales and technical enquiries, please contact:

+44 (0)114 263 4266

info@davidvillagelighting.co.uk

www.davidvillagelighting.co.uk