



LA10024

## Orsjo Belysning Boa Pendant Light

SOURCE: <https://www.davidvillagelighting.co.uk/product/Orsjo-Belysning-Boa-Pendant-Light/20253>



### PRODUCT DESCRIPTION

**Designer:** Gert Wingårdh & Sara Helder

### Boa Pendant by Orsjo Belysning

The Boa collection was designed by Gert Wingårdh & Sara Helder for Orsjo Belysning, a bold form which provides focused downlight for dining or task areas. Boa was inspired by the snake, its elongated form is covered in black leather for a sleek and minimal look. The slightly wider trumpeted end allows for a broader beam of light to bathe the space below.

This design is ideal for spaces in need of focused illumination such as eating areas, kitchen islands or even over a meeting table. Boa is a versatile design which can work well in an array of interiors both domestic and commercial.

**Care advice:**

Wipe the surface with a dry soft cloth.

Do not use water or strong solvents, it will damage the surface.

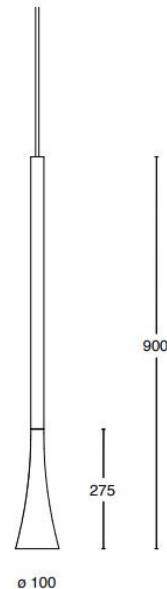
### PRODUCT SPECIFICATION

**Light Source:** 1 x Max 4.5W GU10 PAR16 LED (excluded)

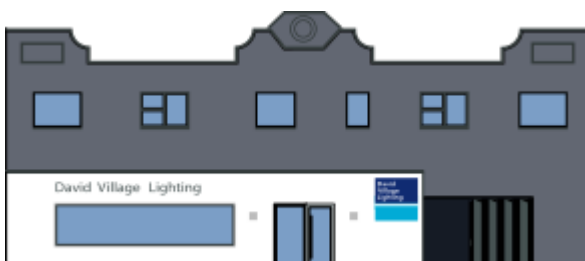
**IP Code:** 20

**Dimming:** Dimmable via mains phase dimming.

**Dimensions:** Shade: Ø10cm  
Shade Height: 27.5cm  
Height: 90cm  
Cable Length: 250cm



BOA CEILING



**For all sales and technical enquiries, please contact:**

+44 (0)114 263 4266

[info@davidvillagelighting.co.uk](mailto:info@davidvillagelighting.co.uk)

[www.davidvillagelighting.co.uk](http://www.davidvillagelighting.co.uk)