

louis poulsen

Louis Poulsen VL Ring Crown Chandelier

LA10018

SOURCE: <https://www.davidvillagelighting.co.uk/product/Louis-Poulsen-VL-Ring-Crown-Chandelier/20239>



PRODUCT DESCRIPTION

Designer: Vilhelm Lauritzen

Louis Poulsen VL Ring Crown Chandelier

The VL Ring Crown Chandelier comes from a light originally designed by architect Vilhelm Lauritzen for the Danish Broadcasting House in the 1940s. The VL38 and VL45 were also designed for that same project, and it was just they that were eventually utilised at the Danish Broadcasting House.

In 2019, Louis Poulsen relaunched the now iconic chandelier in three sizes, with 3, 5 or 7 shades made from 3-layered mouth-blown opal glass. Wanting to remain true to the material originally intended for the light, the VL Ring Crown is made of untreated brass, allowing for a natural patina to form over time, adding to its beauty.

PRODUCT SPECIFICATION

Light Source: **3 Shades:** 3 x Max 12W E27 LED (Excluded)
5 Shades: 5 x Max 12W E27 LED (Excluded)
7 Shades: 7 x Max 12W E27 LED (Excluded)

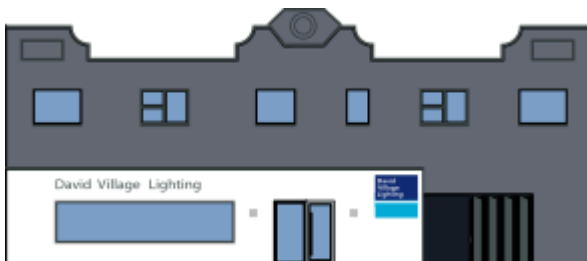
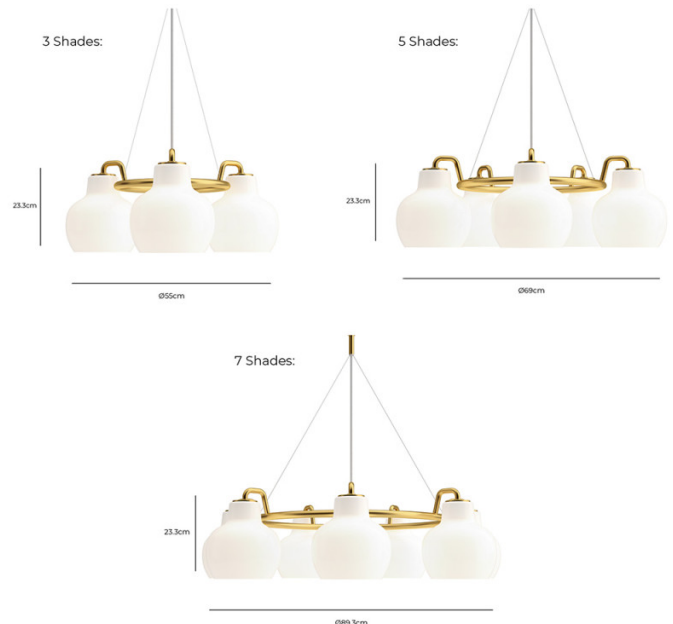
IP Code: 20

Dimming: Non-Dimmable.

Dimensions: **3 Shades:**
 Ø55cm
 Height: 23.3cm

5 Shades:
 Ø69cm
 Height: 23.3cm

7 Shades:
 Ø89.3cm
 Height: 23.3cm



For all sales and technical enquiries, please contact:

+44 (0)114 263 4266

info@davidvillagelighting.co.uk

www.davidvillagelighting.co.uk