

FLOS

LA6046

Flos Noctambule Low Cylinder and Bowl LED Pendant

SOURCE: <https://www.davidvillagelighting.co.uk/product/Flos-Noctambule-Low-Cylinder-and-Bowl-LED-Pendant/20149>



PRODUCT DESCRIPTION

Designer: Joris Laarman

Flos Noctambule Low Cylinder and Bowl LED Pendant

This product is an Offline Only exclusive, available only to buy from selected authorised Flos dealers. Please [contact us](#) for pricing or to arrange an appointment to discuss this product in our [showroom](#).

Two glass modules, a bowl and a cylinder come together to form the Noctambule pendant light. Designed by Konstantin Grcic for Flos, the pendant has two LED rings at the top and where the cylinder meets the bowl. The Noctambule Low emits a direct downlight, while the LED rings make the lamp immediately stand out in a room. Ideal for hanging above a dining table and especially useful in high-ceiling rooms to add a dramatic effect.

The Noctambule Suspension is available in four sizes. The Noctambule S1 has one low cylinder and bowl, Noctambule S2 has two low cylinders and a bowl, Noctambule S3 comes with three low cylinders and the bowl, and the longest and largest version is Noctambule S4 with 4 cylinders and a bowl.

PRODUCT SPECIFICATION

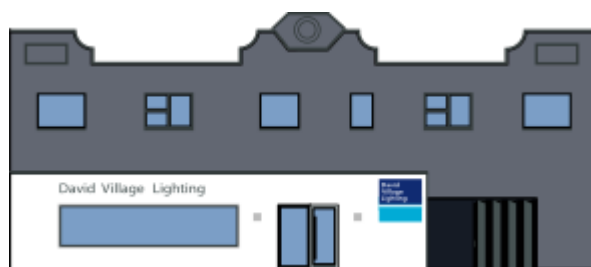
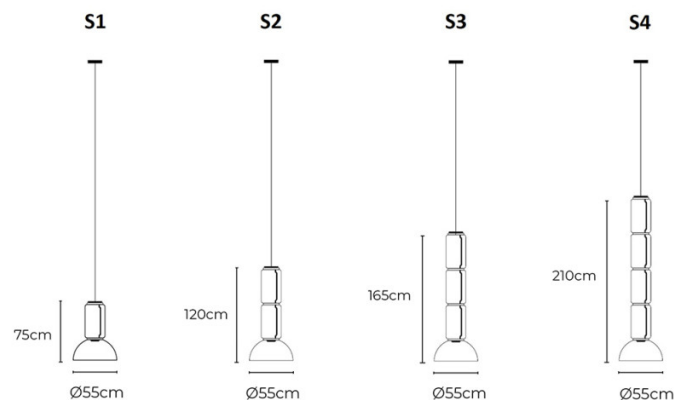
Light Source: **S1:** 2 x 9W & 1 x 18W, 2700K, 1007 Lumens
S2: 3 x 9W & 1 x 18W, 2700K, 1293 Lumens
S3: 4 x 9W & 1 x 18W, 2700K, 1579 Lumens
S4: 5 x 9W & 1 x 18W, 2700K, 1865 Lumens

IP Code: 20

Dimming: Dimmable via 1-10V/Dali/Push dimming systems. Please consult your electrician, additional wiring may be required on site.

Dimensions: **S1:**
Ø55cm
Height: 75cm
S2:
Ø55cm
Height: 120cm
S3:
Ø55cm
Height: 165cm
S4:
Ø55cm
Height: 210cm

Cable Length: 400cm



For all sales and technical enquiries, please contact:

+44 (0)114 263 4266

info@davidvillagelighting.co.uk

www.davidvillagelighting.co.uk