



Warm Nordic Cone Pendant

LA6007

SOURCE: <https://www.davidvillagelighting.co.uk/product/Warm-Nordic-Cone-Pendant/20097>



PRODUCT DESCRIPTION

Designer: Svend Aage Holm-Sørensen

Warm Nordic Cone Pendant

The Cone Pendant was designed by Svend Aage Holm-Sørensen in the 1950s and reintroduced by Warm Nordic. The classic design features geometric shapes throughout the pendant, creating a strong, clean profile. There are perforated grooves around the shade, which allows light to escape and create a subtle effect around the luminaire. The Cone Pendant provides direct downward light, perfect to use as a task light above a desk or kitchen island. Alternatively, they can be installed in multiples, creating a striking display in clusters in a room, or lining the length of a hallway.

The Cone Pendant is available in a variety of colours, all finished in Warm Nordic's exclusive silk-matt colour quality. This ensures quality as well as durability. Each finish has a solid brass ring around the shade. This attention to detail and ornamental metalwork is synonymous with Svend Aage Holm-Sørensen's designs. With a vast selection of finishes, this elegant pendant will fit seamlessly into a range of contemporary interiors.

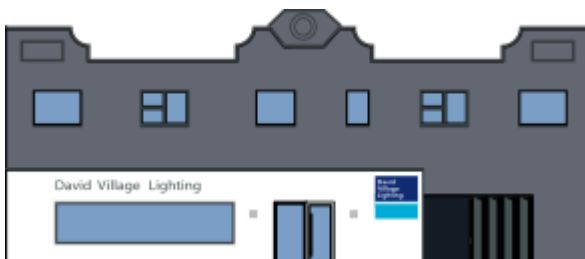
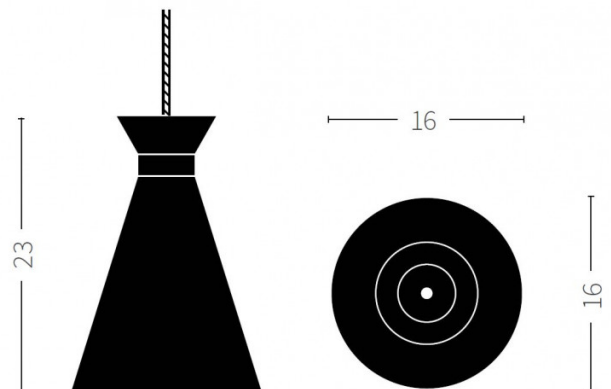
PRODUCT SPECIFICATION

Light Source: 1 x Max 25W E27 (excluded)

IP Code: 20

Dimming: Dimmable via mains phase dimming.

Dimensions: Shade Ø: 16cm
Height: 23cm



For all sales and technical enquiries, please contact:

+44 (0)114 263 4266

info@davidvillagelighting.co.uk

www.davidvillagelighting.co.uk