

**Tom  
Dixon.**

LA5238/LED

## Tom Dixon Melt LED Surface Light

SOURCE: <https://www.davidvillagelighting.co.uk/product/Tom-Dixon-Melt-LED-Surface-Light/20077>

### PRODUCT DESCRIPTION

**Designer:** Tom Dixon

### Tom Dixon Melt LED Surface Light

The Tom Dixon Melt Surface light can be installed on your wall or ceiling, all depending on your preference. For this addition to the Melt collection, the Melt's spherical shape has been compressed yet is still completely recognisable as the Tom Dixon classic Melt design. The perfect imperfection of the injection moulded diffuser, with a mesmerising effect, changes from mirrored when switched off, to molten glass when switched on.

The Melt Surface Light is also available in an opal finish with a choice of silver or gold wall mount. The opal finish does not share the same mirrored and molten glass effects as the metallic finishes; instead it is opaque when switched off and becomes a soft glowing orb when switched on, providing an increased luminosity compared to the other finishes. The [Tom Dixon Melt Collection](#) also includes a smaller surface light, pendants in two sizes, multiple canopy options, floor lamps, table lamps and portables.

Tom Dixon has released the bronze finish of the Melt Surface Light to celebrate the Melt's 10th anniversary. This new finish has a more muted aesthetic than previous colourways, designed to suit a wide range of interiors and add a sophisticated element to the room.

**Please Note:** The integrated LED light engine of the Melt Surface Light is replaceable. This can only be sourced via Tom Dixon. Please [contact us](#) for more details and pricing.



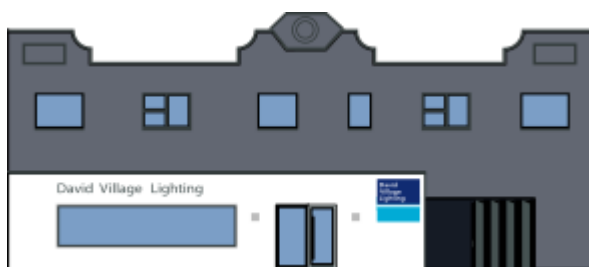
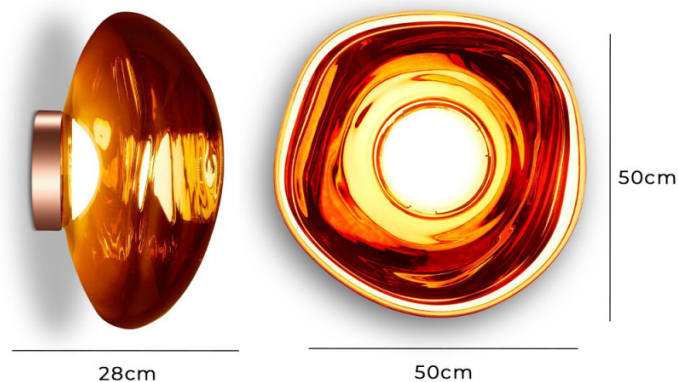
## PRODUCT SPECIFICATION

**Light Source:** 6W, 3000K, 800 Lumens

**IP Code:** 20

**Dimming:** Dimmable using leading edge and trailing edge.

**Dimensions:** Width: 50cm  
Height: 50cm  
Depth: 28cm



**For all sales and technical enquiries, please contact:**

+44 (0)114 263 4266

[info@davidvillagelighting.co.uk](mailto:info@davidvillagelighting.co.uk)

[www.davidvillagelighting.co.uk](http://www.davidvillagelighting.co.uk)