

**vitra.**

**Vitra Akari 1A Lamp**

LA5888

SOURCE: <https://www.davidvillagelighting.co.uk/product/Vitra-Akari-1A-Lamp/19844>

**PRODUCT DESCRIPTION**

**Designer:** Isamu Noguchi

**Vitra Akari 1A Table Lamp**

Part of the Akari Light Sculptures, the 1A is designed by Isamu Noguchi, 1951, and made with white washi paper, bamboo, and a steel wire structure with painted steel wire legs.

The Akari Light Sculptures (1951) by Isamu Noguchi are a series of luminaires, handcrafted from traditional washi paper by Japanese artisans. 'The harshness of electricity is ... transformed through the magic of paper back to the light of our origin – the sun.' (Noguchi).



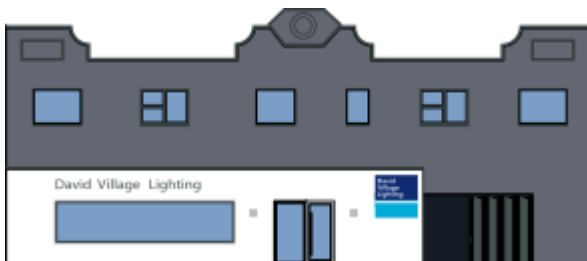
**PRODUCT SPECIFICATION**

**Light Source:** 1 x Max 4W E27 LED Non-Dimmable (Included)

**IP Code:** 20

**Dimming:** In-line on/off switch included on cable.

**Dimensions:** Height: 43cm  
Width: 25cm  
Cable Length: 130cm



**For all sales and technical enquiries, please contact:**

+44 (0)114 263 4266

info@davidvillagelighting.co.uk

www.davidvillagelighting.co.uk