



# ModoLuce Angelica Wall Light

LA4947-M

SOURCE: <https://www.davidvillagelighting.co.uk/product/ModoLuce-Angelica-Wall-Light/19713>

## PRODUCT DESCRIPTION

**Designer:** Grasselli + ModoLuce R&D

### ModoLuce Angelica Wall Light

The ModoLuce Angelica Wall Light combines minimalist elegance with functional versatility, making it a standout addition to both residential and commercial spaces. Designed by Grasselli + Modo Luce R&D, this light features a sleek metal structure available in matt white or black, paired with a matching cotton fabric lampshade for a cohesive, refined look. The cantilevered arm offers a 160-degree rotation, ensuring optimal light direction and adaptability to your environment.

Perfect for creating warm, inviting atmospheres, the Angelica Wall Light is ideal for living rooms, bedrooms, or public spaces seeking a relaxed ambiance. The light can be supplied with either a cable and plug or as a hardwired version, catering to various installation preferences. For a bespoke touch, additional shade colours are available on request, making the Angelica Wall Light as customisable as it is stylish.

**Please note, this product comes with the choice of a hard-wired version (with external cabling) or a cable and plug version, with the cable and plug version having the option for an in-line dimmer on request. Please [contact us](#) for more details and pricing.**



## PRODUCT SPECIFICATION

**Light Source:** 1 x Max 70W E27 (Excluded)  
**IP Code:** 20  
**Dimming:** **Cable and Plug:** In-line on/off switch included on cable.  
**Hard-wired:** Dimmable via mains phase dimming.

**Dimensions:** **120:**

Shade: Ø45cm  
Shade Height: 22cm  
Depth: 120cm  
Full Height: 80cm

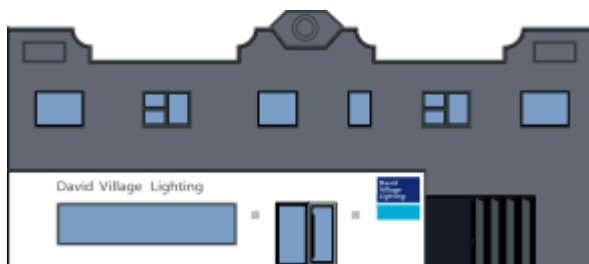
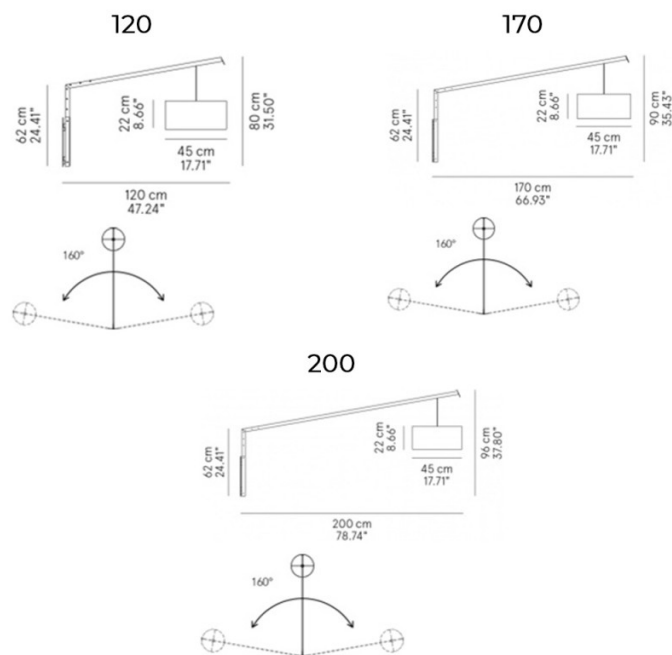
**170:**

Shade: Ø45cm  
Shade Height: 22cm  
Depth: 170cm  
Full Height: 90cm

**200:**

Shade: Ø45cm  
Shade Height: 22cm  
Depth: 200cm  
Full Height: 96cm

Cable Length (Cable and Plug): 295cm



**For all sales and technical enquiries, please contact:**

+44 (0)114 263 4266

[info@davidvillagelighting.co.uk](mailto:info@davidvillagelighting.co.uk)

[www.davidvillagelighting.co.uk](http://www.davidvillagelighting.co.uk)