

MICHAEL ANASTASSIADES

LA5801

Michael Anastassiades Architectural Pendant

SOURCE: <https://www.davidvillagelighting.co.uk/product/Michael-Anastassiades-Architectural-Pendant/19701>



PRODUCT DESCRIPTION

Designer: Michael Anastassiades

Michael Anastassiades Architectural Pendant

The Michael Anastassiades Architectural Pendant is a striking testament to minimalist design. Featuring a mouth-blown opaline glass diffuser suspended from a polished brass or nickel rod, this pendant offers a harmonious balance of form and function. Its geometric simplicity allows it to blend seamlessly into modern interiors, while the warm glow of the opaline glass creates a welcoming ambiance.

Available in various sizes, from subtle to statement-making, this pendant adapts to a range of applications, from dining areas to open spaces. The pendant's customisable rod length ensures a tailored fit for any ceiling height, while its luxurious finishes add a touch of understated elegance to the space.

This product is also available in Plated Copper and Custom Patina Finishes by request only, please [contact us](#) to discuss pricing and availability.

Please note, when ordering this product please [contact us](#) to specify your preferred drop.

PRODUCT SPECIFICATION

Light Source: **P80:** 1 x Max 2W LED G9 (Included)
P150: 1 x Max 4W G9 LED (Included)
P250: 1 x Max 20W E27 LED (Included)
P350: 1 x Max 20W E27 LED (Included)

IP Code: 20

Dimming: Dimmable via Triac dimming.

Dimensions: **P80:**

Shade: Ø80cm
Canopy: Ø6.2cm / Ø12cm
Canopy Height: 4cm
Drop: 20-208cm

P150:

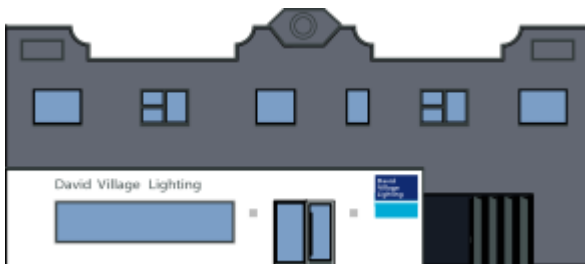
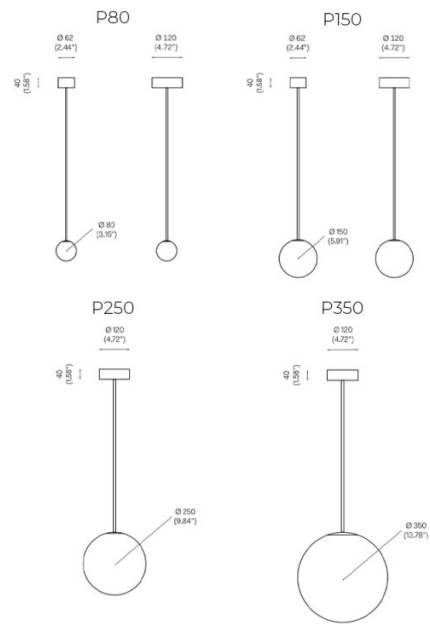
Shade: Ø150cm
Canopy: Ø6.2cm / Ø12cm
Canopy Height: 4cm
Drop: 30-215cm

P250:

Shade: Ø250cm
Canopy: Ø12cm
Canopy Height: 4cm
Drop: 40-224.5cm

P350:

Shade: Ø350cm
Canopy: Ø12cm
Canopy Height: 4cm
Drop: 50-234cm



For all sales and technical enquiries, please contact:

+44 (0)114 263 4266

info@davidvillagelighting.co.uk

www.davidvillagelighting.co.uk