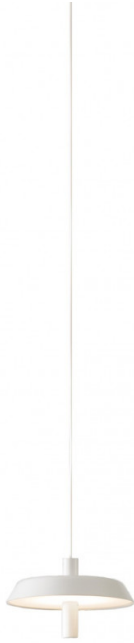


prandina
LIGHTING STORIES

LA5707

Prandina Landing S1 LED Pendant

SOURCE: <https://www.davidvillagelighting.co.uk/product/prandina-landing-s1-led-pendant/19558>



PRODUCT DESCRIPTION

Designer: Sergio Prandina

Landing S1 LED Pendant Light by Prandina

The Landing S1 pendant was designed in 2017 by the brand's founder Sergio Prandina. Both minimalist and contemporary in style, this pendant is characterised by its discoid shape and sharp lines. The pendant emits a completely downward light which is diffused, perfect to use as a spotlight. With a built-in LED module, this light is also energy-saving and dimmable.

The Landing S1 pendant light comes in either a matt white colour finish, a subtle choice which means it can slip into any design scheme. This pendant light is also quite small, making it perfect for smaller spaces but also good for big spaces when grouped together. You can buy several of the same colour or mix the two to create more variety in your décor. Match with other lights from the [Prandina Landing collection](#), to create a seamless light scheme.

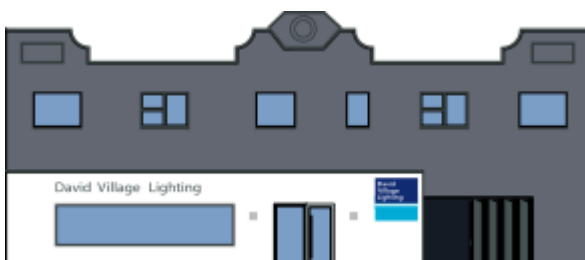
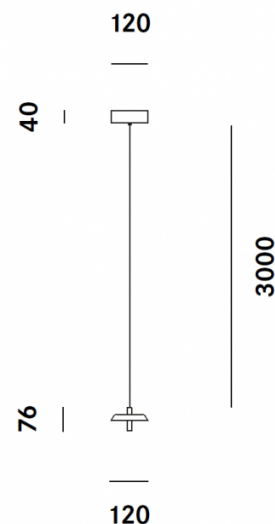
PRODUCT SPECIFICATION

Light Source: 4.8W, 3000K, 720 lumens

IP Code: 20

Dimming: Dimmable via mains phase dimming

Dimensions: Ø12cm shade
7.6cm shade height
Ø12cm ceiling rose
4cm ceiling rose height
3m cable length



For all sales and technical enquiries, please contact:

+44 (0)114 263 4266

info@davidvillagelighting.co.uk

www.davidvillagelighting.co.uk