

Prandina Marlene LED Pendant

LA5703

SOURCE: <https://www.davidvillagelighting.co.uk/product/prandina-marlene-led-pendant/19552>



PRODUCT DESCRIPTION

Marlene LED Pendant by Prandina

The Marlene LED pendant was designed in 2010 by the Prandina team and has a classic design distinguished by its smooth, clean lines. The pendant is made from blown opal white glass which is both elegant and warming. The lampshade diffuses the light wonderfully, creating a nice ambience and a soft glow. The light also directs downwards making it perfect for hanging over tables or as a spotlight.

The simplistic yet effective design makes the Marlene LED pendant light a very versatile and adaptable light that can fit into any setting. The pendant light is available in 3 sizes—Small S1, S1 and S3—making it easy for you to find the right fit for your space. The integrated LED light source also make this pendant an energy-saving and long-lasting light which has a timeless and sophisticated design.

This light is available with a retrofit bulb fitting (bulb excluded). Please [click here](#) to find out more.

PRODUCT SPECIFICATION

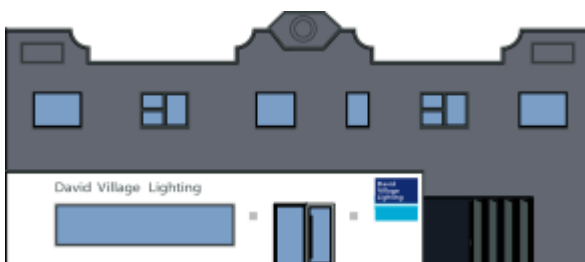
Light Source: Small S1/S1 - 4.8W, 3000K, 720 lumens
S3 - 9.6W, 3000K, 1034 lumens

IP Code: 20

Dimming: Dimmable via mains phase dimming

Dimensions: Small S1 - Ø18cm, H 24cm
S1 - Ø24cm, H 32cm
S3 - Ø30cm, H 40cm

Ø16cm ceiling rose
2m cable length



For all sales and technical enquiries, please contact:

+44 (0)114 263 4266

info@davidvillagelighting.co.uk

www.davidvillagelighting.co.uk