

DCW éditions
PARIS

DCW éditions Lune LED Pendant

LA5670

SOURCE: <https://www.davidvillagelighting.co.uk/product/DCW-ditions-Lune-LED-Pendant/19512>



PRODUCT DESCRIPTION

Lune LED Pendant Light by DCW éditions

The Lune LED pendant was designed by Eric de Dormaël, who beautifully combines glass and varnished brass for a stunning light fixture. The pendant lamp has a wonderful opal shape, with a refined brass back and glass diffuser to create a warm and inviting glow. The combination of materials produces a magical and cosmic aesthetic that will draw the eye.

The Lune pendant lamp can be used in a wide variety of settings, whether used alone or in multiple. You can use as a main light or hung over tables and surfaces to add accented light in your space. Use in homes, professional or commercial interiors for a gorgeous and classic look.

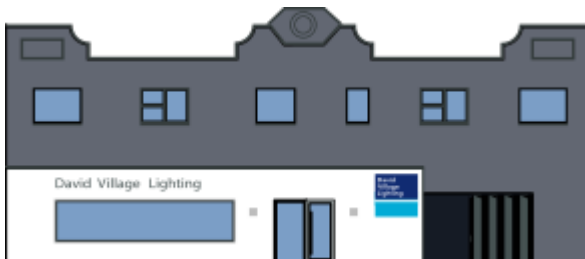
PRODUCT SPECIFICATION

Light Source: 2W, 2700K, 200 lumens

IP Code: 20

Dimming: Non-dimmable (can be dimmable on request - please [contact us](#) for further details)

Dimensions: Ø14.5cm
21cm shade height
24cm height
Ø12cm ceiling canopy
500cm cable length



For all sales and technical enquiries, please contact:

+44 (0)114 263 4266

info@davidvillagelighting.co.uk

www.davidvillagelighting.co.uk