

Artemide

LA5627

Artemide Calipso LED Suspension

SOURCE: <https://www.davidvillagelighting.co.uk/product/Artemide-Calipso-LED-Suspension/19381>



PRODUCT DESCRIPTION

Designer: Neil Poulton

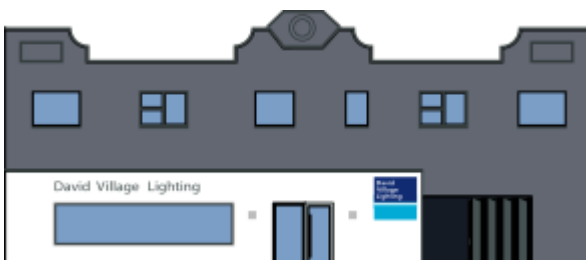
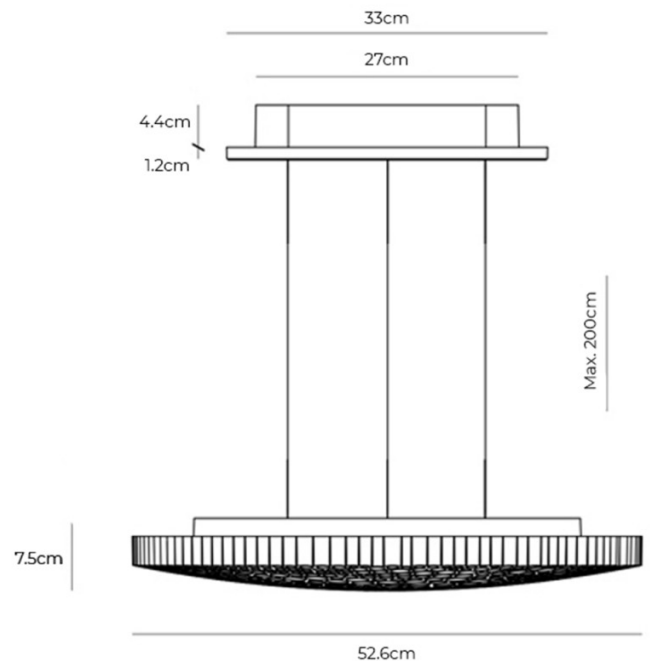
Artemide Calipso LED Suspension Light

The Artemide Calipso LED Suspension was designed by Neil Poulton and is a striking luminaire. Poulton is known for his eye-catching designs, and he created the Calipso by feeding an image of the moon through a complex algorithm. The large surface of this suspension light is comprised of various thin tube sections that together form an almost perfect circle. Calipso is an ode to nature's irregular geometries, a true example of aesthetics and optical intelligence.

You can select between a 2700K or 3000K colour temperature depending on the needs of your space, and the lighting output can also be easily dimmed to generate the ambience you desire most. The Calipso is also available in an [App Compatible version](#), controlled via the Artemide App for further convenience.

PRODUCT SPECIFICATION

Light Source:	55W, 2700K or 3000K, 2884 Lumens
IP Code:	20
Dimming:	Push to make/switch dimming, dimmable using push to make switches. Please consult your electrician, additional wiring may be required on site.
Dimensions:	Ø52.6cm Depth: 7.5cm Max. Cable Length: 200cm Ceiling Rose: Ø27cm



For all sales and technical enquiries, please contact:

+44 (0)114 263 4266

info@davidvillagelighting.co.uk

www.davidvillagelighting.co.uk