

wästberg

LA5617

## Wastberg W127 Winkel LED P2 Table Lamp

SOURCE: <https://www.davidvillagelighting.co.uk/product/Wastberg-W127-Winkel-LED-P2-Table-Lamp/19362>



### PRODUCT DESCRIPTION

**Designer:** Dirk Winkel

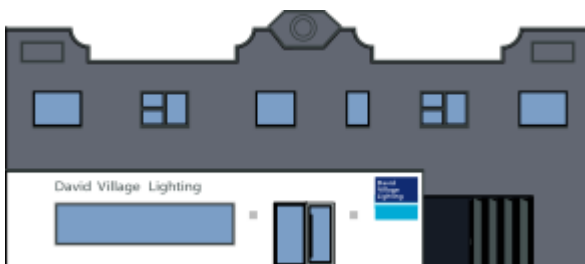
### Wastberg W127 Winkel P2 Table Lamp

The W127 Winkel P2 Table Lamp is one of Wastberg's award-winning task lights, curated to prove sturdy lamps don't require wood or metal to be high quality. With an integrated pin base, the P2 Table Lamp can be mounted into your desk in order to save space in your workspace.

This table lamp features Wastberg's highly efficient anti-glare protection, that guarantees no loss of light. Built around a COB LED, it is a well thought out, engineered lighting solution perfect for any desk or workspace. The lamp's arms are solid biopolyamide, with the power cord and spring attached to the exterior, fully visible; this arm and construction provides flexibility whilst remaining stable.

### PRODUCT SPECIFICATION

<b>Light Source:</b>	6W, 3000k, 1000 lumens
<b>IP Code:</b>	20
<b>Dimming:</b>	A built-in timer automatically turns the lamp off after 9 hours. Equipped with a seamless dimmer that is operated by an IR-switch.
<b>Dimensions:</b>	40.2cm arm lengths 7.2cm shade width 4cm pin length 200cm cable length



**For all sales and technical enquiries, please contact:**

+44 (0)114 263 4266

[info@davidvillagelighting.co.uk](mailto:info@davidvillagelighting.co.uk)

[www.davidvillagelighting.co.uk](http://www.davidvillagelighting.co.uk)