

PORTA ROMANA

## Porta Romana Neolith Wall Light

LA5611

SOURCE: <https://www.davidvillagelighting.co.uk/product/Porta-Romana-Neolith-Wall-Light/19353>



### PRODUCT DESCRIPTION

Porta Romana Neolith Wall Light TWL114.  
Conceived by Gareth Devonald Smith. Overlapping smooth sheaths of textured white metal create a subtle diffusion of light. Architectural in character our Neolith Wall Light defines quiet elegance.

Finishes available:  
1 Galactic Gold/2 Galactic Silver/3 Stucco White

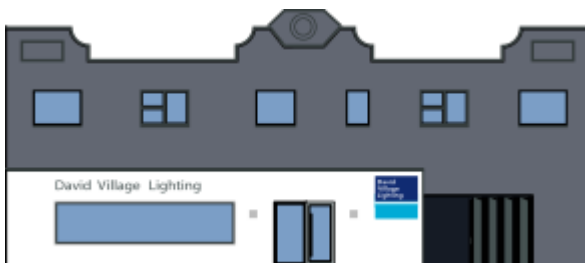
CONSTRUCTED FROM  
Forged steel with a decorative finish

### PRODUCT SPECIFICATION

**Light Source:** 1 x 3W LED G9 (excluded)

**IP Code:** 20

**Dimensions:** HEIGHT 500mm  
WIDTH 120mm  
PROJECTION 100mm



**For all sales and technical enquiries, please contact:**

+44 (0)114 263 4266

[info@davidvillagelighting.co.uk](mailto:info@davidvillagelighting.co.uk)

[www.davidvillagelighting.co.uk](http://www.davidvillagelighting.co.uk)