



LA5607

Bover Elipse LED Outdoor Pendant

SOURCE: <https://www.davidvillagelighting.co.uk/product/Bover-Elipse-LED-Outdoor-Pendant/19348>



PRODUCT DESCRIPTION

Designer: Alex Fernández Camps & Gonzalo Milá

Bover Elipse Outdoor LED Suspension

The Bover Elipse LED Outdoor Suspension is a simple, free and flexible solution for exterior spaces. Designed in 2017 by Alex Fernandez Camps and Gonzalo Mila, this luminaire is the definition of contemporary simplicity and is curated from polyethylene, a highly durable and weather resistant material. Along with the IP certification of 66, this makes the Elipse LED perfect for illuminating your outdoor areas.

The spherical diffuser of the Elipse LED Outdoor Pendant produces a warm and ambient light output that is glare free. A perfect lighting solution for summer evenings in your garden and illuminating public outdoor spaces such as parks and outdoor seating for restaurants and bars.

PRODUCT SPECIFICATION

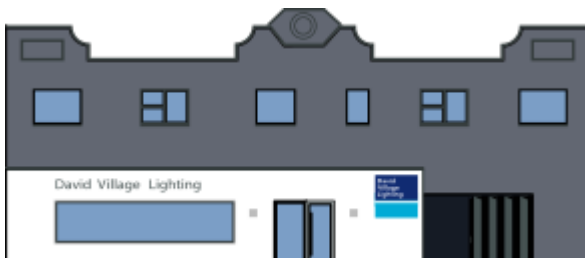
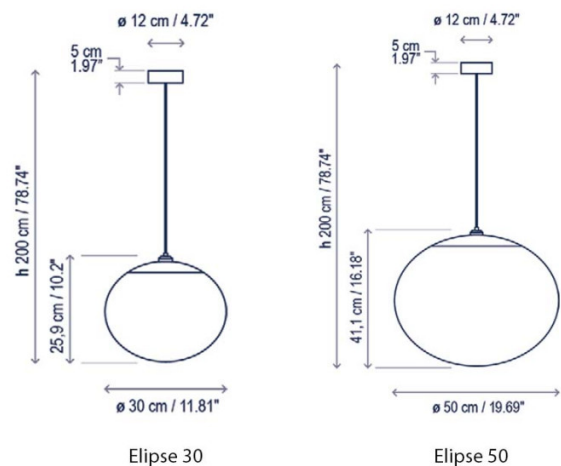
Light Source: **30:** 17.1W, 2700K, 2064 Lumens
50: 24.7W, 2700K, 3000 Lumens

IP Code: 66

Dimming: Dimmable via Triac dimming.

Dimensions: **Elipse 30:**
Ø30cm
Shade Height: 25.9cm
Full Height: 200cm

Elipse 50:
Ø50cm
Shade Height: 41.1cm
Full Height: 200cm



For all sales and technical enquiries, please contact:

+44 (0)114 263 4266

info@davidvillagelighting.co.uk

www.davidvillagelighting.co.uk