

**Artemide**

LA5574/

## Artemide Discovery Vertical LED Suspension

SOURCE: <https://www.davidvillagelighting.co.uk/product/Artemide-Discovery-Vertical-LED-Suspension/19274>



### PRODUCT DESCRIPTION

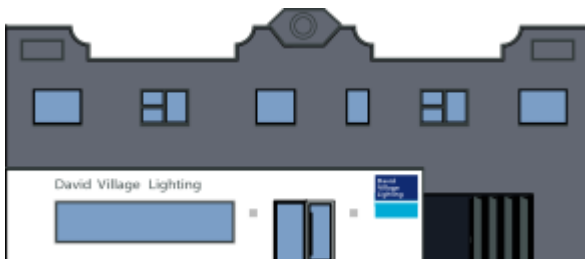
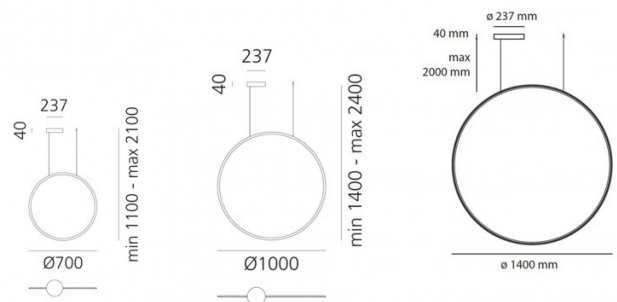
**Designer:** Ernesto Gismondi

### Discovery Vertical by Artemide

Discovery Vertical lights are the ingenious design of Ernesto Gismondi, founder of the Studio Artemide S.a.s., from which the Artemide Group was formed. Discovery Vertical is an immaterial light, almost absent and unobtrusive. The light is comprised of an aluminium rim, hosting the LED strips that in turn project light into a transparent PMMA surface. The light only becomes perceptible when switched on, and the central surface is outlined by the light. A magical transition between a fully transparent and clear central surface that becomes a beam of light in a uniform way. The suspension is available in three sizes with a diameter choice of 70cm, 100cm or 140cm. Discovery Vertical is a sibling to the [Discovery suspension](#), which lies flat, hanging from the ceiling. This suspension is also available in an [App Compatible](#) version, fully controlled via the Artemide App.

### PRODUCT SPECIFICATION

- Light Source:** Vertical 70 - 40W, 3000K, 2857 lumens  
Vertical 100 - 60W, 3000K, 4859 lumens  
Vertical 140 - 80W, 3000K, 6762 lumens
- IP Code:** 20
- Dimming:** Vertical 70 - Push to make/switch dimming, dimmable using push to make switches.  
Vertical 100 - Push to make/DALI dimming systems.  
Vertical 140 - Push to make/DALI dimming systems.
- PLEASE consult your electrician, additional wiring may be required on site
- Dimensions:** Vertical 70 - Ø70cm, 110-210cm cord  
Vertical 100 - Ø100cm, 140-240cm cord  
Vertical 140 - Ø140cm, 180-280cm cord
- Ø 23.7 cm ceiling rose



**For all sales and technical enquiries, please contact:**

+44 (0)114 263 4266

[info@davidvillagelighting.co.uk](mailto:info@davidvillagelighting.co.uk)

[www.davidvillagelighting.co.uk](http://www.davidvillagelighting.co.uk)