



Menu Reade Table Lamp - Brass

LA5515/B

SOURCE: <https://www.davidvillagelighting.co.uk/product/Menu-Reade-Table-Lamp---Brass/19177>



PRODUCT DESCRIPTION

Menu Reade Table Lamp

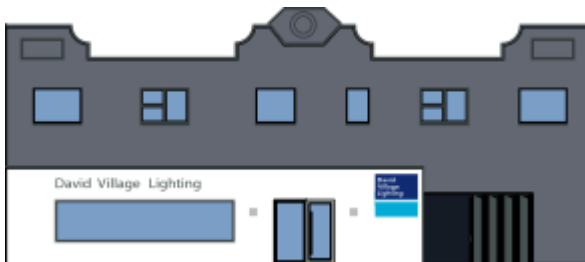
Reade Table Lamp is a part of MENU's Tribeca Series. The Tribeca Series of lamps started with a journey. Søren Rose travelled across America on a mission to collect beautiful lamps dating back to the early-mid 20th century. The Danish designer, who lives and works in New York, took his finds back to his studio, dismantled them, separated their parts and reassembled them, mixing and matching lamps as he went along. Out of this experimentation Tribeca was born – a fresh perspective on iconic modern design.

Lamp excluded

PRODUCT SPECIFICATION

Dimming: on/off switch

Dimensions: H: 34 cm
W: 15 cm
D: 15 cm



For all sales and technical enquiries, please contact:

+44 (0)114 263 4266

info@davidvillagelighting.co.uk

www.davidvillagelighting.co.uk