



## Menu Harrison Chandelier

LA5511

SOURCE: <https://www.davidvillagelighting.co.uk/product/Menu-Harrison-Chandelier/19171>



### PRODUCT DESCRIPTION

**Designer:** 328

Menu Harrison Chandelier.

The Tribeca series of lamps started with a classic American road trip. Danish designer Søren Rose travelled across the US collecting lamps from the early to mid 20th century. He took his cache back to the studio in New York, dismantled and reassembled them, mixing and matching lamps. Out of this experimentation the Tribeca series was born, inspired by the glamour of New York in the late 1930s, with a decidedly industrial feel.

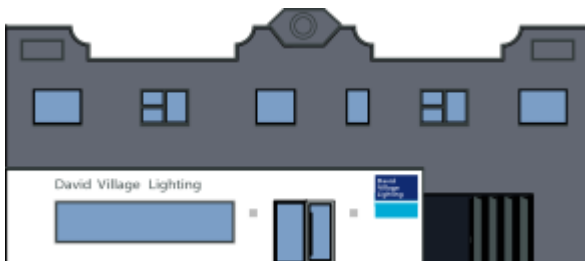
### PRODUCT SPECIFICATION

**Light Source:** 5 x max 60W E27 (excluded)

**IP Code:** 20

**Dimming:** Non dimmable.

**Dimensions:** 85 cm height  
Ø 50 cm



**For all sales and technical enquiries, please contact:**

+44 (0)114 263 4266

[info@davidvillagelighting.co.uk](mailto:info@davidvillagelighting.co.uk)

[www.davidvillagelighting.co.uk](http://www.davidvillagelighting.co.uk)